



RIVERSIDE COUNTY  
**HEALTH  
COALITION**

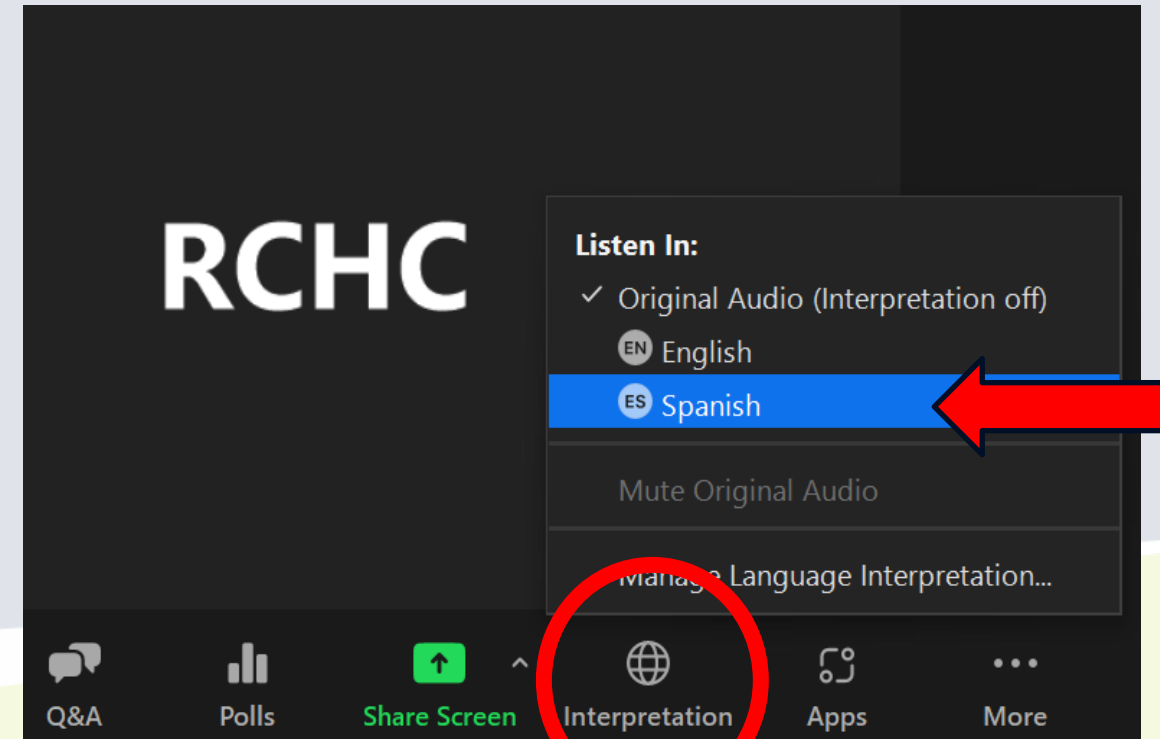
*It Takes a Village: Caring for Our Elders and  
Maintaining Health as We Age*

*Se Necesita Una Comunidad: Cuidando a Nuestros Adultos  
Mayores y Manteniendo la Salud a Medida Que Envejecemos*

**Welcome! We will begin  
momentarily.**

**¡Bienvenidos! Comenzaremos en  
un momento.**

January 21, 2026



*Para audio en español, primero haga clic  
en la opción de "Interpretation." Luego  
hará clic en la opción de "Spanish".*



RIVERSIDE COUNTY  
**HEALTH  
COALITION**

# *It Takes a Village: Caring for Our Elders and Maintaining Health as We Age*

*Se Necesita Una Comunidad: Cuidando a Nuestros Adultos Mayores y  
Manteniendo la Salud a Medida Que Envejecemos*

# **Welcome!**

**¡Bienvenida!**

## **AGENDA**

**Welcoming Remarks and Introduction**

**Land Acknowledgement**

**Presentation by Janet Goeske Foundation**

Dee Keoski, Senior Resource Advisor

**Presentation by Alzheimer's Association | California Southland**

Arlene Bruins, MSG, Program Manager, Inland Empire

**Break/Networking**

**Presentation by Blue Zones Activate, Mead Valley**

Hashish Rivera-Elberson, Community Transformation Director

**Survey/Gift Card Activity**

**Action Group and CHIP Update**

**Partner Updates**

**Health Equity Updates/Wrap-Up**



# LOGISTICS / LOGÍSTICA

## In-Person:

- Please sign in at the greeter's table
- Restrooms located in the hallway
- Lactation room available. Staff will monitor throughout the meeting.
- Scan the QR code for closed captioning services in English & Spanish. An ASL Interpreter is available.
- Slides and a recording of this event will be shared after the meeting.



English/ **Español**  
Stream Text

## En persona:

- Regístrese en la mesa de bienvenida
- Baños ubicados en el pasillo
- Sala de lactancia disponible. El personal supervisará durante toda la reunión.
- Escanee el código QR para servicios de subtítulos en Inglés y Español. Un intérprete de ASL esta disponible.
- Las diapositivas y una grabación de este evento se compartirán después de la reunión.

# LOGISTICS / LOGÍSTICA

## Virtual:

- Please enter your name, pronouns, and affiliation in your profile name
- Staff will monitor throughout the meeting
- All participants are muted upon entry
- Please submit any questions through the Q&A box
- We have closed captioning services in English & Spanish and an ASL Interpreter.
  - Information provided in the chat or scan the QR code.



English/ **Español**  
Stream Text

## Virtual:

- Por favor ingrese su nombre, pronombres, y afiliación en su nombre de perfil.
- El personal supervisará durante toda la reunión.
- Todos los participantes son silenciados al entrar.
- Envíe cualquier pregunta a través del cuadro de preguntas y respuestas.
- Contamos con servicios de subtítulos en inglés y español y un intérprete de ASL.
  - Información proporcionada en el chat.

Acjachemen (Juaneño)

Cahuilla

Newe (Western  
Shoshone)

Nuwuvi (Southern  
Paiute)

Nūwūwū (Chemehuevi)

Payómkawichum  
(Luiseño)

Tongva (Gabrielino)

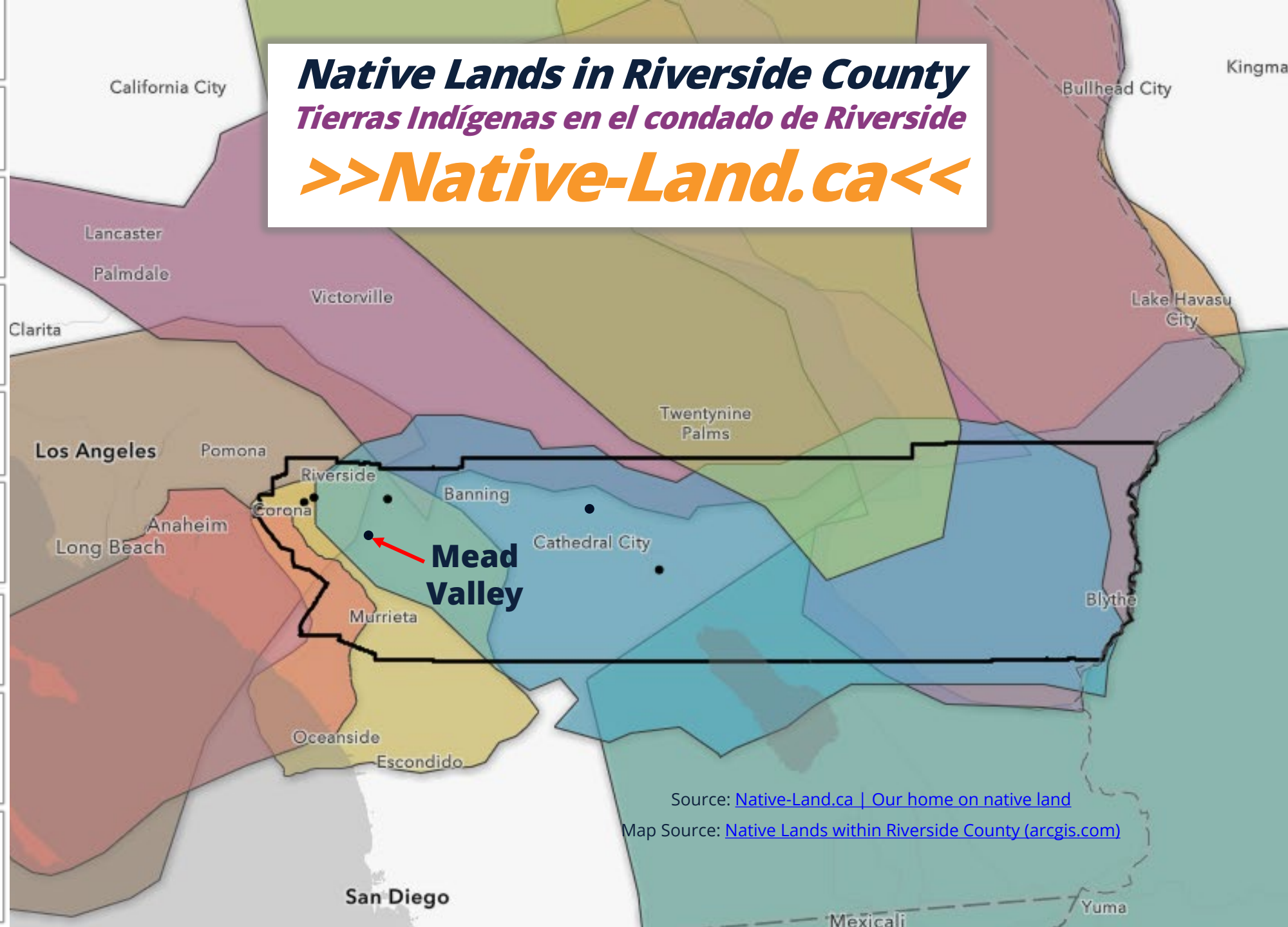
Xawill kwñchawaay  
(Cocopah)

Yuhaviatam/Maarenga'y  
am (Serrano)

# ***Native Lands in Riverside County***

## ***Tierras Indígenas en el condado de Riverside***

**>>Native-Land.ca<<**



Source: [Native-Land.ca](https://Native-Land.ca) | Our home on native land

Map Source: [Native Lands within Riverside County \(arctis.com\)](https://Native-Lands-within-Riverside-County-arctis.com)

# Riverside County Health Coalition Land Acknowledgement



RIVERSIDE COUNTY  
**HEALTH  
COALITION**



**Health Equity**  
RIVERSIDE COUNTY  
PUBLIC HEALTH



**Riverside  
University**  
**HEALTH SYSTEM**  
Public Health

# Land Acknowledgment

The Riverside University Health System – Public Health, Health Equity program acknowledges the traditional, ancestral, and contemporary homelands of the Indigenous Peoples of Riverside County whose land we occupy. The Iviatem (Cahuilla), Payómkawichum (Luiseño), Maara'yam (Serrano), Nuwuvi (Chemehuevi), and Tongva (Gabrieleño) peoples have been the caretakers of this land, water, and air since time immemorial.

Indigenous Peoples have been forcefully displaced or relocated and colonization is ongoing with their lands still occupied due to the dishonest illusion of promised treaties. The Health Equity program commits to practicing cultural humility and reciprocity, respecting, and supporting the tribal sovereignty, culture, and beliefs of Indigenous Peoples of Riverside County and beyond.

We hope to build an honest, ongoing relationship with Indigenous Peoples in Riverside County as we learn from their vast experiences. We recognize that there have been past injustices and aim to move toward reconciliation with good intentions and respect. We challenge you to join us in this work. If you are unaware of whose land you are currently occupying, we encourage you to learn about the Indigenous Peoples in your area, their history and ongoing resilience.



RIVERSIDE COUNTY  
**HEALTH  
COALITION**

Mission:  
*to **Promote, Improve, and Sustain***  
social and physical environments for health and wellness in Riverside County!

¡Una coalición hecha para  
***Promover, Mejorar y Mantener***  
entornos sociales y físicos para la salud y el bienestar en el condado de Riverside!

# Why are we here?

*¿Por qué estamos aquí?*

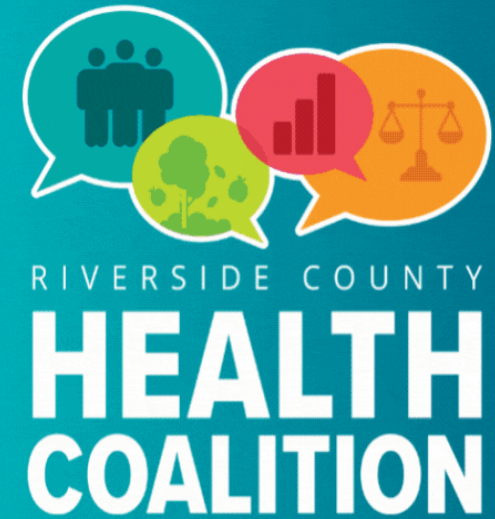


- Expansion of partnerships
- Share resources
- Highlighting innovative practices
- Community empowerment

- Expansión de asociaciones
- Recursos compartidos
- Destacando prácticas innovadoras
- Empoderamiento de la comunidad

**RCHC Website:**

## **Community Resources and Events**



*Connect with us!*

*Check out the website  
for resources and  
events in the  
community!*

*\*Updated monthly*



Click or Scan the  
QR Code to check it out!

If you have any questions, email us at [RivCoHealthEquity@RUHealth.org](mailto:RivCoHealthEquity@RUHealth.org)

# "Who's in the Room? Let's Find Out!"

*"¿Quién está aquí? ¡Averigüémoslo!"*

# What sector does your organization represent?

## *¿Qué sector representa su organización?*

- Community Members/ Students
- Community-Based Organizations / Faith-Based Organizations
- Education / Academia
- Government
- Healthcare / Public Health
- Housing/ Planning
- Law Enforcement / First Responder
- Native / Tribal Community
- Social Services / Mental Health
- Other

- *Miembros de la comunidad/Estudiantes*
- *Organizaciones basadas en la comunidad / Organizaciones basadas en la fe*
- *Educación / Academia*
- *Gobierno*
- *Cuidado de Salud / Salud Pública*
- *Vivienda/ Planificación*
- *Aplicación de la ley/ Primeros Auxilios*
- *Comunidad Nativa / Tribal*
- *Servicios Sociales / Salud Mental*
- *Otro*

# Representation Matters!

*¡La representación importa!*





WORLD BE WELL, INC.



MORONGO  
BAND OF  
MISSION  
INDIANS  
A SOVEREIGN NATION



Building Bridges for Special Needs-CV



# Janet Goeske Foundation

## *Presentation*



*Arlene Bruins, MSG (She, Her, Hers)  
Alzheimer's Association  
Program Manager- Inland Empire*



JANET GOESKE  
FOUNDATION

TOGETHER FOR OUR SENIORS  
Supporting the Vision of the Janet Goeske  
Foundation





## WHAT WE OFFER:

### A Holistic Approach to Aging

- We remove barriers to care and access to vital services
- Supporting the mind, body, and spirit through wraparound services



### HEALTH EDUCATION & SUPPORT GROUPS

- **Doc Talks**, Health Insurance Counseling
- **Nutrition Programs** (Breakfast & Lunch)
- Health Coaching, Dementia & Caregiver Support
- **Support Groups:** Parkinson's, Deaf Seniors, Blind Community

### SENIOR RESOURCES

- Utility Assistance (RPU)
- Food Pantry
- Access to legal and healthcare services
- Housing Navigation
- DMV & Social Security Services
- Estate Planning

### ACTIVITIES & EVENTS

- **Creative & Social:** Billiards, Art, Bingo, Movie Days, Drama Club
- **Seasonal:** Medicare Expo, Holiday Festivals, Health Fair
- **Cultural:** Black History Month, Cinco de Mayo

### FITNESS & WELLNESS

- Yoga, Water Aerobics, Pickleball, Tai Chi
- Chair Volleyball, Sit & Be Fit, Strength Training
- 100 Mile Club

# The Goeske Difference: Our Impact

One of California's largest and most active community centers for seniors

- 25,000 Sq. Ft. Facility
- 400 Daily Visitors
- 200+ Programs and Services
- 7 FT, 1 PT Staff, 150+ Volunteers
- 122,000 Annual Senior Visits
- \$1.9 Million Operating Budget
- Supported by the City of Riverside and Managed by the Foundation

# OUR MISSION:

To enrich the quality of life of those  
50 and older in the community we serve.





# OUR VISION:

To be the trusted voice and advocate  
for those we serve.



Our  
pillars

be **ACTIVE**

eat **HEALTHY**

have **FUN**

stay **CONNECTED**



Be ACTIVE

Over 200 activities weekly

Dance  
Exercise classes  
Chair Yoga \*  
Volleyball  
Pickle ball  
Table tennis

Billiards  
State of the art gym  
Strength Training  
Water exercise \*  
Walking

Caregivers can bring their clients to their activities.  
If the caregiver is over 50 and so-inclined, they can join in

• Riverside Community  
College





# b e HEALTHY

Ever expanding nutrition programming includes:

Free daily congregate meal\*

Pantry food

Produce give-away\*\*

Free breakfast twice monthly

Tasting food demo monthly

Nutrition classes monthly with expert partner\*\*\*

SNAP education\*

Doc talks

Health screenings



\*Riverside County Office on Aging

\*\*Overflow farms

\*\*\*Nan Simonson -partner





# Have FUN

Music groups  
Dance  
Drama club Talent Show  
Reader's Theater Card  
games  
Bunco Fun club  
Supper club Volunteer  
Mah Jong and dice

BINGO  
Sewing  
Crochet and knitting  
Art classes  
Ceramics  
Rock painting  
Woodworking and carving  
Quilting





# stay CONNECTED

Brand new AT&T Connected Learning Center

Volunteer opportunities

Congregate lunch program \*

Support groups\*\*

Mental Health counseling \*\*

Seasonal Festivals

Health Expos and events\*\*

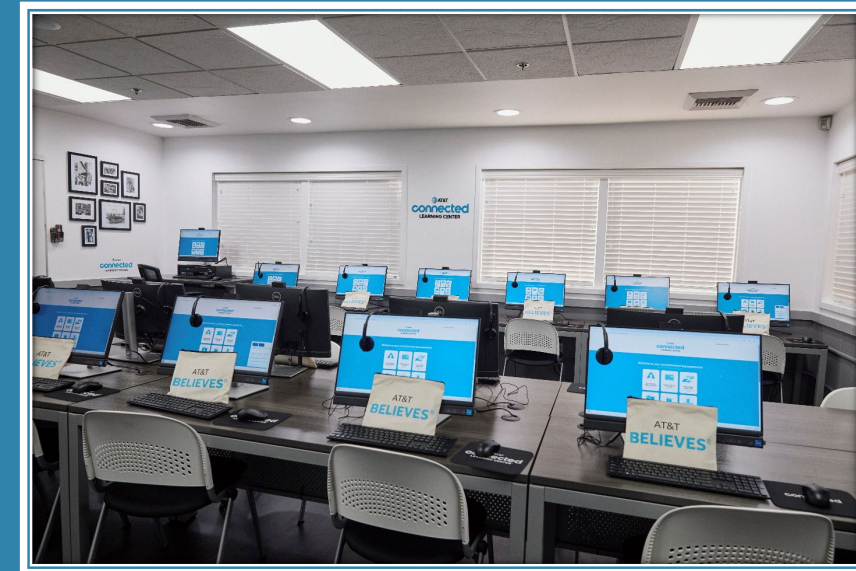
Movies

Clubs

\*Office on Aging

\*\*Community

Partners





# How we serve

Senior Resource Advisor and team

Connect with HICAP\*

Connect with RPU\*

Hair salon

Massages\*\*

Inland Caregivers presentations\*\*

Help understand health Insurance \*\*

Transportation solutions\*\*\*

Legal services\*\*

Silver Angels

Medical equipment repair and donation \*\*

Alzheimer education \*\*

\* Governments

\*\* Partners - non-profit and businesses



***We're in this together***

***1 in 4 Seniors are  
isolated***

***raising dementia risk by 40% and premature death by 50%***

***1 in 4 face mobility limitations***

***creating a transportation barrier***

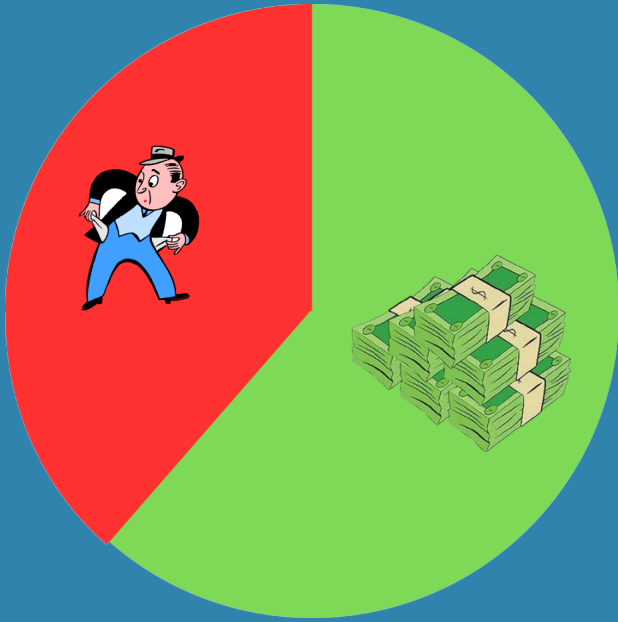
***1 in 3 suffer from  
depression***

***only 10% receive care***

***10% lack consistent access to nutritious food***

***risking health when a proper diet is unavailable***

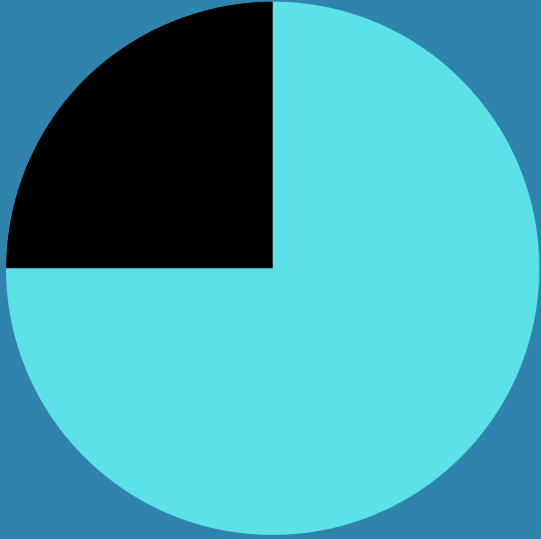
*We're in this together*



Poverty level = \$11K  
California Elder Index = \$32K

***30% live twice below the poverty level  
experiencing a financial strain that affects physical and mental  
health***

The California Elder Index as a percentage of the federal poverty level is  
consistently greater than 200% of the FPL guidelines



***25% have never used the internet***  
***creating a digital divide that keeps them separate from  
what connects everyone else***

this is just the  
beginning ....

**600%  
increase\***

**in the senior population in our  
region**

- The largest generation is aging in place
- Medical advancements allow people to live longer
- The Inland Empire offers more affordable housing

**\*over the next 20 years**

*source: The Inland Coalition on  
Aging*

and yet.....

1%

**of Inland Empire foundation grants  
support senior programming**

*source: USCensus, RivCo, Inland Coalition on Aging*

# **SENIORS PROGRAMS ARE AT RISK**

- **State and federal funding cuts are a reality**
- **Our Congregate lunch and Senior Employment programs have been cut**
- **Many seniors live on limited savings and fixed Social Security income**
- **These cuts threaten their nutrition, independence, and dignity**
- **This is a scary time, especially for our most vulnerable**

**NOW MORE THAN EVER, COMMUNITY SUPPORT IS  
ESSENTIAL**



We're in this village and we're here to help!

# Goeske Trusted Partners



- AARP (American Association of Retired Persons)
- Alzheimer's Association
- AT&T
- Barbara Douglas (Salon Services)
- Blain Quesada (Massage Therapy)
- Bureau of Automotive Repair
- Cal Fresh (Food Services)
- Dial-A-Ride
- Friendly Excursions (Travel)
- HICAP
- Inland Counties Legal Services
- Medi-Cal Rx
- NARFE (National Active and Retired Federal Employees Association)
- National Federation of the Blind (NFB)
- Need yMed s

- OC Food Box
- Office on Aging
- Ostomy Foundation
- Over Flow Farms
- Parkinson's Foundation
- Riverside Braille Club (RBC)
- Riverside Connect
- Riverside Deaf Seniors
- Riverside Transit Agency
- RPEA (Retired Public Employees Association)
- RPU (Riverside Public Utilities)
- TRIP (Transportation)
- Covenant of Courage (Veteran's Services)
- Victoria E. Watts Mobile Notary

# Q & A

***PREGUNTAS Y RESPUESTAS***

# Alzheimer Association

## *Presentation*



*Arlene Bruins, MSG (She, Her, Hers)*  
*Alzheimer Association*  
*Program Manager- Inland Empire*



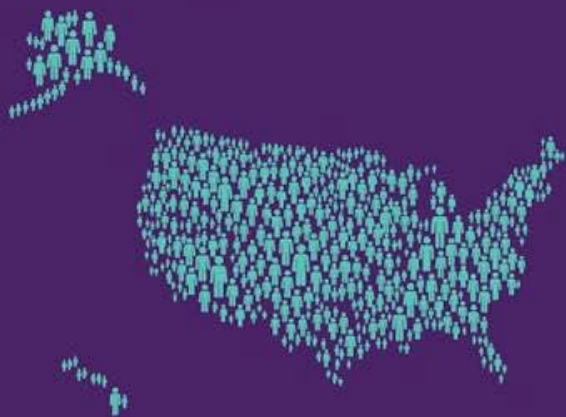
# Supporting **Brain Health** in Our Community

[www.alz.org/hello](http://www.alz.org/hello)



# 2025 ALZHEIMER'S DISEASE FACTS AND FIGURES

Over  
**7 MILLION**  
Americans are living with  
Alzheimer's



**1 IN 3**

older adults dies  
with Alzheimer's or  
another dementia



while deaths  
from  
Alzheimer's  
disease have  
increased

**142%**

Between  
2000 and  
2022 deaths  
from heart  
disease have  
decreased

**2.1%**



**NEARLY  
12  
MILLION**

Americans provide  
unpaid care for people  
with Alzheimer's or  
other dementias

These caregivers  
provided more than  
19 billion hours  
valued at nearly

**\$413  
BILLION**



**IT KILLS MORE THAN**

breast cancer



prostate cancer

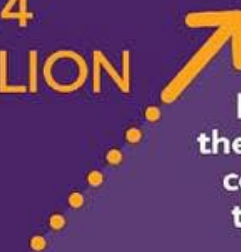
**COMBINED**

In 2025, Alzheimer's  
and other dementias  
will cost the nation

**\$384  
BILLION**

By 2050,  
these costs  
could rise to nearly

**\$1  
TRILLION**



The lifetime  
risk for Alzheimer's  
at age 45 is

**1**

**IN**

**5**

for  
women

**1**

**IN**

**10**

for  
men

**UP TO  
4 IN 5**

Americans feel  
optimistic about new  
Alzheimer's treatments  
in the next decade



of Americans would  
want a medication to  
slow the progression of  
Alzheimer's following  
a diagnosis

## About the Alzheimer's Association

The Alzheimer's Association leads the way to end Alzheimer's and all other dementia — by accelerating global research, driving risk reduction and early detection, and maximizing quality care and support.

Our vision is a world without Alzheimer's and all other dementia®.



# Cognitive Decline

Cognitive decline refers to changes in memory, thinking, and/or reasoning that are worsening over time.



# Dementia

An umbrella term for loss of memory and other thinking abilities **severe enough to interfere with daily life**. Dementia is NOT a normal part of aging.

Alzheimer's

Vascular

Lewy body

Frontotemporal

Other, including Huntington's

Mixed dementia: from more than one cause

# Early Detection and Treatment



Early detection is important, **pay attention to any changes in memory, thinking or behavior** that you notice in yourself or someone else.



There are treatments that can change disease progression, and drug and non-drug options that may help treat symptoms. **Talk to your doctor to learn more about treatment options.**



# Risks to Brain Health

In most cases, Alzheimer's is the result of complex interactions across multiple factors.

## Non-modifiable

Ones we cannot change

- » Age
- » Genetics
- » Family history

## Modifiable

Ones we can change!

- » Certain health conditions
- » Health behaviors

# 10 HEALTHY HABITS FOR YOUR BRAIN

---



**Protect your  
head**



**Be smoke-  
free**



**Get moving**



**Challenge  
your mind**



**Control your  
blood pressure**



**Manage  
diabetes**



**Sleep well**



**Stay in  
school**

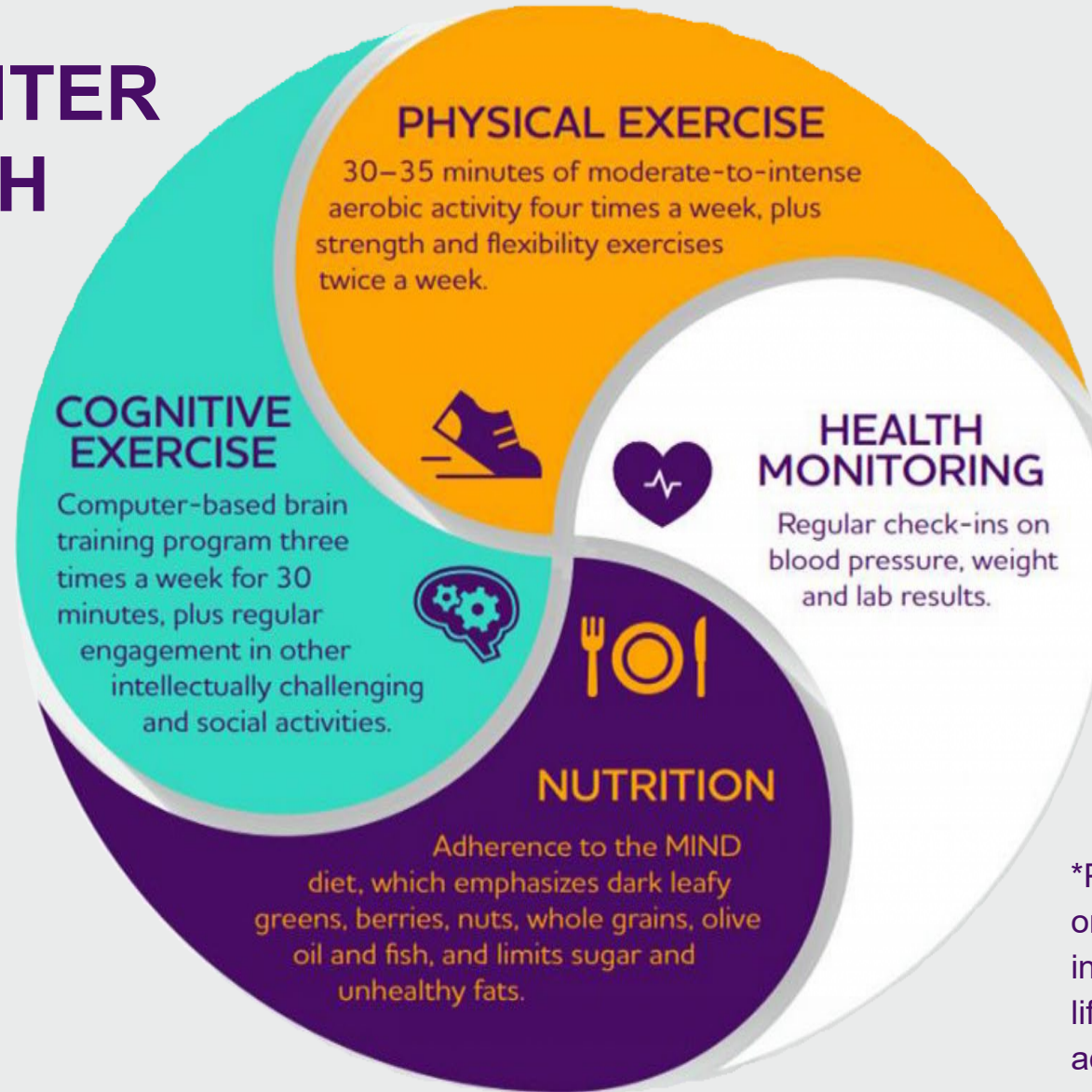


**Eat right**



**Maintain a  
healthy weight**

# THE U.S. POINTER BRAIN HEALTH RECIPE\*



\*Participants followed either a self-guided or structured lifestyle program. The two interventions both focused on the same lifestyle domains, but differed in structure, accountability and support provided.



# Take Charge of Your Brain Health



There are several risk factors for cognitive decline, such as age, we can't control. But there are **actions we can take to improve our brain health.**



Growing evidence shows that **healthy living can help reduce the risk of cognitive decline and possibly dementia.**



Our brains need to be taken care of **early or too late** to take action to protect them.



## 24/7 Helpline



The Alzheimer's Association 24/7 Helpline (800.272.3900) is a free service offering confidential information and support for people living with dementia, caregivers, families and the public.



## Free Education and Support


The Association offers robust information, education and support both in person and online, and helps to connect individuals with resources in the community.

## TrialMatch®

The Association connects individuals living with cognitive impairment, Alzheimer's disease or another dementia, caregivers and healthy participants with current research studies. This free, easy-to-use service helps you find clinical research that may be a good fit.



# WALK TO END ALZHEIMER'S

ALZHEIMER'S  ASSOCIATION®

Held annually in more than 600 communities nationwide, the **Alzheimer's Association Walk to End Alzheimer's®** is the world's largest fundraiser for Alzheimer's care, support and research.

[alz.org/walk](https://alz.org/walk)



Do What You Love to End ALZ makes it easy to make a difference. It's simple, flexible and starts with you — doing something you love and turning it into a fundraiser to end Alzheimer's and all other dementia.

There's no limit to what you can do!

From hiking, golfing, gaming, or crafting, to playing pickleball or bridge, hosting a cookout or purple party — choose your passion, add the power of your community, and get started.

# DO WHAT YOU LOVE TO END ALZ™

ALZHEIMER'S  ASSOCIATION®

[alz.org/dowhatyoulove](https://alz.org/dowhatyoulove)

ALZHEIMER'S  ASSOCIATION



# Q & A

***PREGUNTAS Y RESPUESTAS***

# Break/Networking

*Receso*

# Blue Zones

## *Presentation*



***Hashish Rivera – Elberson (she/her/hers)***  
***Blue Zones Mead Valley***  
***Community Transformation Director***





# Hashish Rivera - Elberson

Community Transformation Director

*It Takes a Village*

*Caring for Our Elders and Maintaining Health as We Age*

Presentation



# OUR PURPOSE

To empower **everyone**,  
**everywhere** to live better,  
longer.



# Mead Valley

---

Unincorporated community  
with limited infrastructure

Fewer gathering spaces and  
walkable environments

Transportation and food  
access challenges

Older adults face isolation  
and access barriers





# Blue Zones Activate

An intensive  
three-year initiative designed  
to accelerate community-endorsed change  
delivering healthier environments through  
transformation.

- 
- Focused on making the healthy choice the easy choice
  - Work across food access, built environment, and policy
  - Designed for long-term, sustainable impact

# Food Systems Policy Wins

## Food Access & Nutrition

- Launched and sustained a weekly farmers market at the Mead Community Center
- Distributed Produce vouchers prioritizing families and older adults
- Partnered with the local corner store to address food insecurity by distributing produce bags during the holiday season



# Built Environment Policy

## Built Environment & Social Connection

- Advancing Joint-Use Agreement discussions
- Safe Routes to School initiatives with multigenerational benefits
- Community advocacy for shared spaces and walkability
- Increased opportunities for social connection



# Strengthening Collaboration

- Partnerships with faith-based organizations
- Collaboration with elected officials, schools, and local businesses
- Alignment with public health and healthcare partners
- Shared outreach and coordinated efforts



# Our Partners





# It Truly Takes a Village



# Thank you!

Stay connected with Blue Zones Activate Mead Valley



Hashish at [Hashishrivera@bluezones.com](mailto:Hashishrivera@bluezones.com)

# Q & A

***PREGUNTAS Y RESPUESTAS***

# Kindly take our survey

*Por favor responda a nuestra encuesta*

Your feedback will help us advance health equity in  
Riverside County, together!

¡Sus comentarios nos ayudarán a promover la equidad en salud en el condado de  
Riverside, juntos!

English & Español



The survey link is also in the chat.

*El enlace de la encuesta también está en el chat.*

# Gift Card Activity

Email us at [RivCoHealthEquity@ruhealth.org](mailto:RivCoHealthEquity@ruhealth.org),

**Subject line:** January 2026 RCHC Meeting – “It Takes a Village”  
answering these two questions:



- ❖ **Make it Actionable!** What is one thing you learned today that you plan to apply to your professional or personal life around aging and caregiving services?
- ❖ **Wisdom from the Village!** Share one piece of wisdom or advice from an elder, or something you’ve learned through caregiving.

**The first 7 people (virtual or in-person) will win a \$25 gift card!**

*\*Disclaimer: County employees and interns are not eligible to receive monetary incentives.*

# Action Group & CHIP Update

Grupo de Acción y  
Actualización del CHIP  
(Plan de Mejora de la Salud Comunitaria)

**MENTAL HEALTH/  
BEHAVIORAL HEALTH**

**HOUSING**

**ACCESS TO CARE/  
RESOURCES**

Click or scan  
here to get  
involved!



**ACTION  
GROUPS**



RIVERSIDE COUNTY  
**HEALTH  
COALITION**



**Health Equity**  
RIVERSIDE COUNTY  
PUBLIC HEALTH



**SALUD MENTAL/  
SALUD CONDUCTUAL**

**VIVIENDA**

**ACCESO A LA  
ATENCIÓN/RECURSOS**

¡Haga clic o  
escanee aquí  
para participar!



RIVERSIDE COUNTY  
**HEALTH  
COALITION**



**Health Equity**  
RIVERSIDE COUNTY  
PUBLIC HEALTH

**GRUPOS DE  
ACCIÓN**



# Meet Our CHIP Co-Leads!



## Mental and Behavioral Health

Organization	Co-Lead
Kaiser Permanente	Gillian H Stucki
RUHS Behavioral Health	Diana Gutierrez
RUHS Public Health	Sean Cortes
<b><i>Community Member</i></b>	<b><i>YOUR NAME HERE</i></b>

## Access to Care

Organization	Co-Lead
Molina	Sarah Murad
RUHS Public Health	Juanita Irvin
<b><i>Community Member</i></b>	<b><i>YOUR NAME HERE</i></b>

## Housing

Organization	Co-Lead
RUHS Public Health	Miguel Vazquez
<b><i>Community Member</i></b>	<b><i>YOUR NAME HERE</i></b>

# COMING SOON!

## CHIP Action Group Community Co-Leads Recruitment!

Priority areas include:

- Mental/Behavioral Health
- Housing
- Access to Care

Email will be sent when application is open!

A recruitment poster for the CHIP Action Group Community Co-Leads. The poster features a large spotlight beam shining down on the text. At the top left is the Riverside County Health Coalition logo, and at the top right is the Health Equity Riverside County Public Health logo. The main text reads 'CALLING ALL COMMUNITY LEADERS' in large, bold, green letters. Below this, it says 'COMMUNITY HEALTH IMPROVEMENT PLAN (CHIP) ACTION GROUP CO-LEAD APPLICATION' in bold, green and orange letters. The text continues: 'Riverside County Health Coalition (RCHC) is recruiting three community members to serve as CHIP Co-leads. Each selected Co-lead will lead one of the following priority areas: • Mental and Behavioral Health • Housing • Access to Just Care and Resources'. It then lists 'What Co-leads do:' followed by '• Guide and facilitate meetings • Coordinate action group activities • Support collaboration among community partners to advance initiatives that promote health equity throughout Riverside County'. At the bottom, it states 'Honorarium: \$2,000 per year (\$500 per quarter) for each Co-lead'. There is a large black rectangular box at the bottom for contact information.

**CALLING ALL  
COMMUNITY  
LEADERS**

**COMMUNITY HEALTH  
IMPROVEMENT PLAN (CHIP)  
ACTION GROUP  
CO-LEAD  
APPLICATION**

Riverside County Health Coalition (RCHC) is recruiting **three community members** to serve as **CHIP Co-leads**.

Each selected Co-lead will lead one of the following priority areas:

- Mental and Behavioral Health
- Housing
- Access to Just Care and Resources

**What Co-leads do:**

- Guide and facilitate meetings
- Coordinate action group activities
- Support collaboration among community partners to advance initiatives that promote health equity throughout Riverside County

**Honorarium:** \$2,000 per year (\$500 per quarter) for each Co-lead

# **GIFT CARD ACTIVITY WINNERS!**

***GANADORES DE LA ACTIVIDAD DE TARJETAS DE REGALO***

# Partner Updates

Actualizaciones de Socios

# Updates

*ACTUALIZACIONES*



RIVCO PUBLIC HEALTH PODCAST



A podcast that uplifts marginalized voices and brings awareness to social and racial injustices in Riverside County.





RIVCO PUBLIC HEALTH PODCAST



@EquityInRivco



# Links in Chat

*Enlaces en el Chat*

# Stay in touch



[https://www.ruhealth.org/  
health-equity-program](https://www.ruhealth.org/health-equity-program)

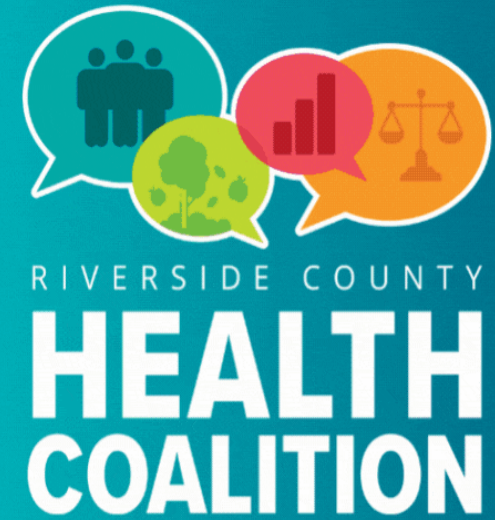
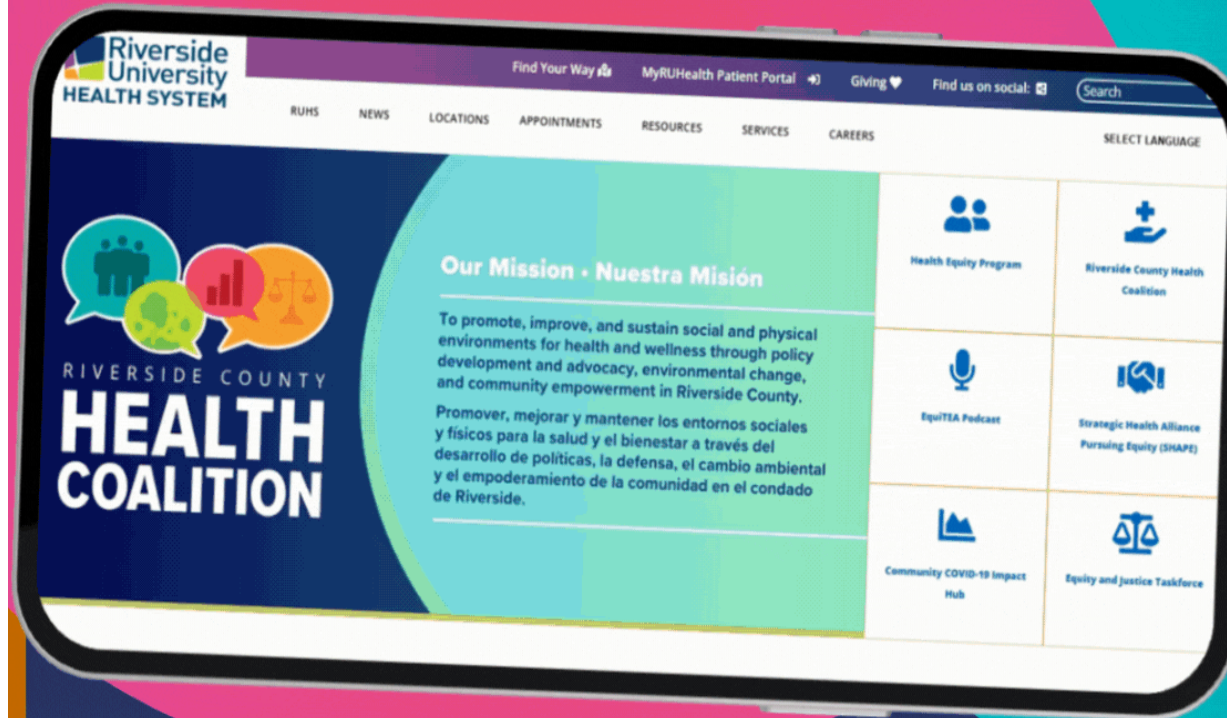


[rivcohealthequity@ruhealth.org](mailto:rivcohealthequity@ruhealth.org)



[@equityinrivco](#) | EquiTEA Podcast

# RCHC Website: Community Resources and Events



*Connect with us!*

*Check out the website  
for resources and  
events in the  
community!*

*\*Updated monthly*



Click or Scan the  
QR Code to check it out!

If you have any questions, email us at [RivCoHealthEquity@RUHealth.org](mailto:RivCoHealthEquity@RUHealth.org)

# Share Your Thoughts

*Comparta sus Ideas*

Kindly take our survey. Your feedback will help us advance health equity in Riverside County, together!

Por favor responda a nuestra encuesta ¡Sus comentarios nos ayudarán a promover la equidad en salud en el condado de Riverside, juntos!

English & Español



The survey link is also in the chat.

*El enlace de la encuesta también está en el chat.*



RIVERSIDE COUNTY  
**HEALTH  
COALITION**

Please pass this  
invitation along to  
your partner  
networks as we  
welcome their  
participation!

Community  
resources and  
events shared by the  
coalition can be  
found on our  
[RCHC Website](#)

## 2026 General Membership Meeting Schedule:

**TIME:**  
10 a.m. - 12:30 p.m.

**LOCATION:** Hybrid  
In Person or Online

[REGISTRATION INFORMATION](#)

**Wednesday, January 21, 2026**

**Wednesday, April 15, 2026**

**Wednesday, July 15, 2026**

**Wednesday, October 21, 2026**

### The Riverside County Health Coalition Mission

The Riverside County Health Coalition is a public and private partnership whose mission is to promote, improve, and sustain social and physical environments for health and wellness through policy development and advocacy, environmental change, and community empowerment in Riverside County.

To fulfill its mission, the Riverside County Health Coalition meets quarterly every year to provide an excellent forum to share knowledge and experience; collaborate and network with other agency partners, schools, and organizations. The coalition aims to gather, support, and mobilize partners from multiple domains; provide leadership and vision; and coordinate county-wide efforts in the promotion of healthier living throughout our County.

@equityinrivco  
**FOLLOW US ON SOCIALS**



### Questions?

Email the Health Equity Team



[RivCoHealthEquity@ruhealth.org](mailto:RivCoHealthEquity@ruhealth.org)



RIVERSIDE COUNTY  
**HEALTH  
COALITION**

¡Por favor, pase  
esta invitación a  
sus redes de  
socios para  
invitarlos a  
participar!

Recursos y  
eventos comunitarios  
compartidos por la  
coalición:  
[RCHC Website](#)

## Calendario de juntas de membresía general del 2026:

**HORARIO:**  
10 a.m. - 12:30 p.m.

**UBICACIÓN:** híbridas  
En persona o en línea

[INFORMACIÓN DE REGISTRO](#)

**Miércoles, 21 de enero, 2026**

**Miércoles, 15 de abril, 2026**

**Miércoles, 15 de julio, 2026**

**Miércoles, 21 de octubre, 2026**

### La misión de la Coalición de Salud del Condado de Riverside

La Coalición de Salud del Condado de Riverside es una asociación pública y privada cuya misión es promover, mejorar y mantener entornos sociales y físicos para la salud y el bienestar a través del desarrollo y la defensa de políticas, el cambio ambiental y el empoderamiento de la comunidad en el Condado de Riverside.

Para cumplir con su misión, la Coalición de Salud del Condado de Riverside se reúne trimestralmente cada año para proporcionar un excelente foro para compartir conocimientos y experiencias; colaborar y establecer contactos con otros socios de agencias, escuelas y organizaciones. La coalición tiene como objetivo reunir, apoyar y movilizar socios de múltiples dominios; proporcionar liderazgo y visión; y coordinar los esfuerzos de todo el condado en la promoción de una vida más saludable en todo nuestro Condado.

@equityinrivco  
**SÍGUENOS EN LOS REDES SOCIALES**



### ¿Preguntas?

Envíe un correo electrónico al  
Equipo de Equidad en Salud



[RivCoHealthEquity@ruhealth.org](mailto:RivCoHealthEquity@ruhealth.org)



# **Riverside County, Health Equity Program**

## **RUHS – Public Health, Epidemiology & Program Evaluation**

### **Programa de Equidad en Salud**

### **Epidemiología y Evaluación de Programas**

[RivCoHealthEquity@ruhealth.org](mailto:RivCoHealthEquity@ruhealth.org)

**Next meeting:**  
Wednesday, April 15<sup>th</sup>, 2026  
The meeting will take place virtually and in person.

**Próxima reunión:**  
miércoles, 15 de abril de 2026  
La reunión se llevará a cabo de manera virtual y presencial.