

COVID-19 Attitudes and Behaviors of Riverside County Residents



COVID-19 Vaccine Side Effects
and
Likelihood of Recommending
Vaccine to Others



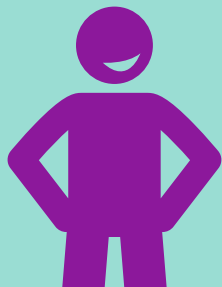
in
affiliation
with



Riverside University Health System – Public Health (RUHS – Public Health) and Health Assessment and Research for Communities (HARC) conducted a study in 2021 about COVID-19 needs among Riverside County adults. HARC collected data in English and Spanish from more than 9,200 randomly selected adults between September 2021 and November 2021. The survey asked questions about attitudes and behaviors towards COVID-19, as well as pandemic experiences and basic needs.

This project was supported by Epidemiology and Laboratory Capacity Enhancing Detection funds and is provided by the Centers for Disease Control and Prevention.

Riverside County residents were asked if they experienced any side effects from the COVID-19 vaccine.



45% of participants reported no side effects



52% of participants reported having side effects



2% of participants didn't know

Riverside County residents were asked if they would recommend the COVID-19 vaccine to others.

67% of participants were extremely likely to recommend the vaccine



2% of participants were extremely unlikely to recommend the vaccine

When comparing the likelihood of recommending the COVID-19 vaccine to others by the side effects of those who reported were fully vaccinated, it was noted that there was an influential effect.



Participants who **did** experience side effects (2%) were more likely to report “extremely unlikely” in recommending the vaccine compared to those who had no side effects (1%).

When comparing the likelihood of recommending the COVID-19 vaccine to others by the side effects of those who reported were fully vaccinated, it was noted that there was an influential effect.



Participants who did **not** experience side effects (**70%**) were more likely to report “extremely likely” in recommending the vaccine compared to those who did have side effects (**66%**).



in
affiliation
with



RUHS – Public Health will use this report to help them offer programs and services that support Riverside County Residents.

To read the full report and learn more about this study, visit <https://bit.ly/3NRNDmm>