

COVID-19 Attitudes and Behaviors of Riverside County Residents



Knowledge of Public
Health Efforts During
COVID-19



in
affiliation
with



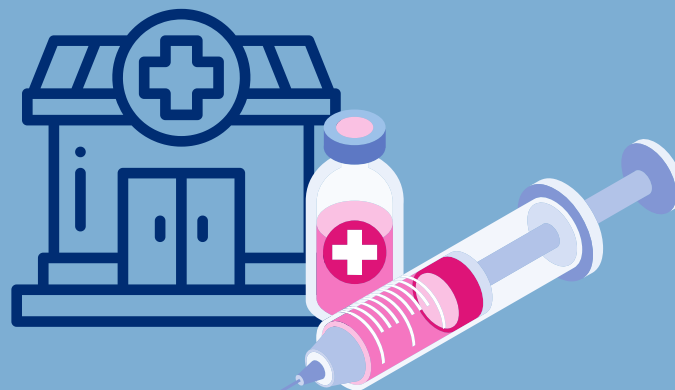
Riverside University Health System – Public Health (RUHS – Public Health) and HARC conducted a study in 2021 about COVID-19 needs among Riverside County adults. HARC collected data in English and Spanish from more than 9,200 randomly selected adults between September 2021 and November 2021. The survey asked questions about attitudes and behaviors towards COVID-19, as well as pandemic experiences and basic needs.

This project was supported by Epidemiology and Laboratory Capacity Enhancing Detection funds and is provided by the Centers for Disease Control and Prevention.

Riverside County residents were asked if they were aware of the testing sites and vaccine sites that RUHS - Public Health was providing to reduce the impact of COVID-19 on the community.



51% of participants
knew of opened
testing sites



47% of participants
knew of opened
vaccine sites

Riverside County residents were asked if they were aware of the work RUHS - Public Health was doing to reduce the impact of the COVID-19 on the community.



28% of participants
actually used testing
sites



33% of participants
actually used vaccine
sites

Riverside County residents reported they were **unaware** of some resources provided by RUHS - Public Health. The following items were some key topics.



mask distribution (**28%**)

food assistance (**20%**)

educational information and videos (**18%**)

childcare assistance (**17%**)





in
affiliation
with



RUHS – Public Health will use this report to help them offer programs and services that support Riverside County Residents.

To read the full report and learn more about this study, visit <https://bit.ly/3NRNDmm>