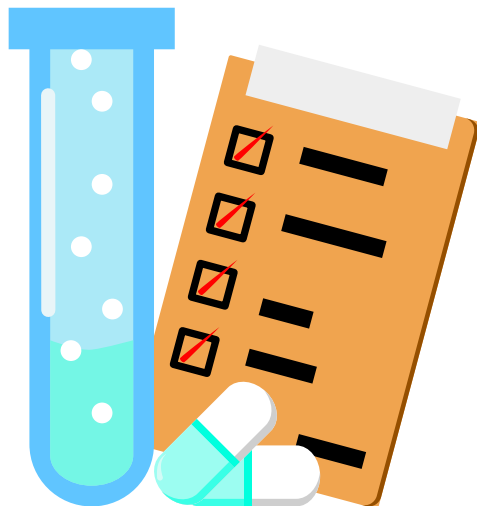


COVID-19 Attitudes and Behaviors of Riverside County Residents



Diagnosis and
Treatment



in
affiliation
with



Riverside University Health System – Public Health (RUHS – Public Health) and Health Assessment and Research for Communities (HARC) conducted a study in 2021 about COVID-19 needs among Riverside County adults. HARC collected data in English and Spanish from more than 9,200 randomly selected adults between September 2021 and November 2021. The survey asked questions about attitudes and behaviors towards COVID-19, as well as pandemic experiences and basic needs.

This project was supported by Epidemiology and Laboratory Capacity Enhancing Detection funds and is provided by the Centers for Disease Control and Prevention.

Riverside County residents were asked if they had ever tested positive for COVID-19.

22% of participants reported testing **positive** for COVID-19



78% of participants reported testing **negative** for COVID-19

Of those who tested **negative** for COVID-19, they were then asked how severe they thought their illness would be if they had tested positive.



10% of participants reported perceived severity of illness as "not at all serious"



39% of participants reported perceived severity of illness as "very serious"

Of those who tested **positive** for COVID-19, they were then asked if they had to stay overnight at the hospital.

6% or approximately
23,179 people in
Riverside County
stayed at least one
night at the hospital



Of those who tested positive and had to stay at least one night in the hospital, **51%** of them were placed in the Intensive Care Unit (ICU).



Artwork by Darren Olivares, copyright 2021.



in
affiliation
with



RUHS – Public Health will use this report to help them offer programs and services that support Riverside County Residents.

To read the full report and learn more about this study, visit <https://bit.ly/3NRNDmm>