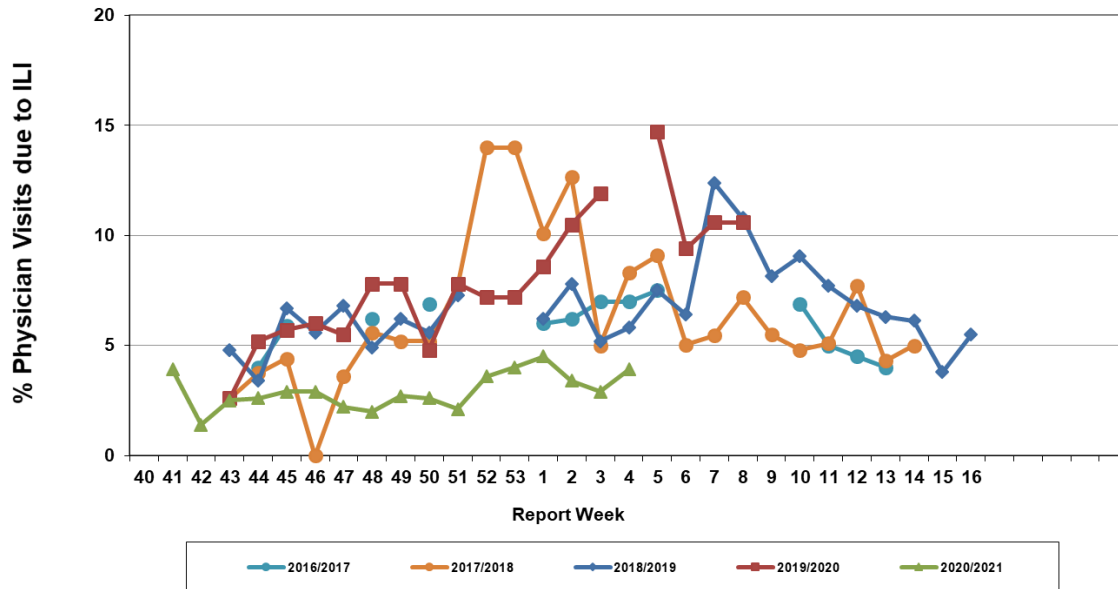


# Influenza Season 2019-2020– Riverside County, California

## Influenza Surveillance Weekly Update

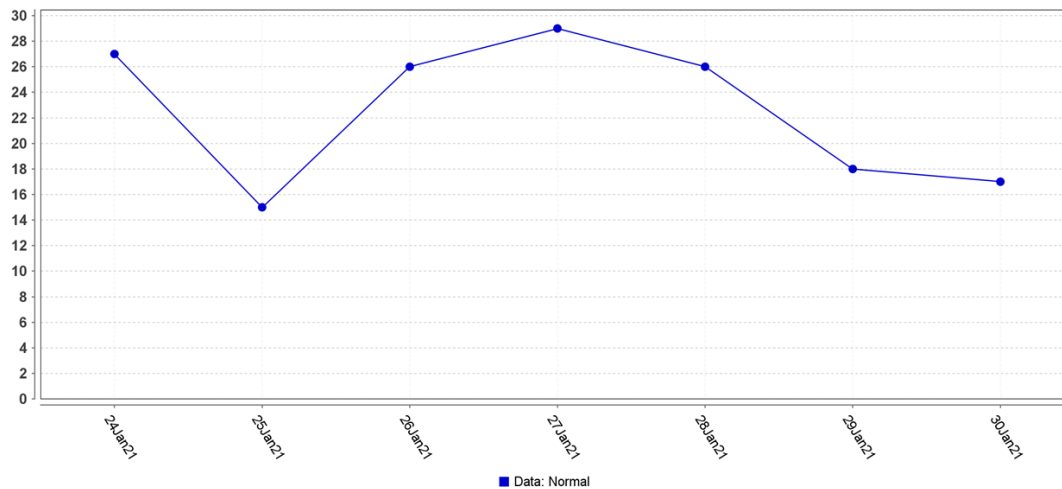
**Week ending January 23, 2020**

### Percent of Total Visits at Physician Sentinel Sites due to Influenza-like Illness (ILI), Riverside County: 2020/2021 Influenza Season



During week 4, 3.9% of visits to physician sentinel sites were related to influenza-like illnesses. Compared to historical data, this is below normal limits.

### Emergency Department ILI Counts / January 24 - 30, 2021 / Week 04



Hospital surveillance system triggers alerts due to unusually high influenza-like illness visits. During week 4 ED visits were below normal range for this time of year, with no warning alerts triggered.

**Deaths due to Pneumonia and Influenza:** During week 4, 2.6% of deaths were due, in part, to pneumonia or influenza. Compared to historical data, this is below normal limits.

**School Absenteeism:** There is no school absenteeism data available at this time.

**State Influenza Activity:** During week 4, overall influenza activity was “**Sporadic**” in California. Based on available data from 93 enrolled sentinel providers, the percentage of visits for ILI in week 4 (1.3%) is within expected baseline levels for this time of year. Eighteen laboratory-confirmed influenza-associated deaths in adults less than 65 years of age were reported since Sept. 27, 2020. Zero laboratory-confirmed influenza outbreaks were reported.

---

**National Influenza Activity:** During week 4, influenza activity remains **lower than usual** in the United States. 1.1% of visits to a health care provider were for ILI. ILI activity remains below the national baseline of 2.6%. During week 4, 28.4% of all deaths reported through the National Center for Health Statistics (NCHS) were due to P&I. This percentage is above the epidemic threshold of 7.1%. One influenza associated pediatric death was reported for the season.

\*Reporting delayed one week

\*\* Reporting delayed several weeks

#### **Additional Resources**

Riverside County Influenza Information:

State of California Influenza Information:

United States Influenza Information:

<http://www.rivco-diseasecontrol.org/Services/InfluenzaInformation.aspx>

<https://www.cdph.ca.gov/Programs/CID/DCDC/Pages/Immunization/Influenza.aspx>

<https://www.cdc.gov/flu/weekly/pastreports.htm>



County of Riverside Department of Public Health  
<http://www.rivcohealthdata.org> (951) 358-5557

