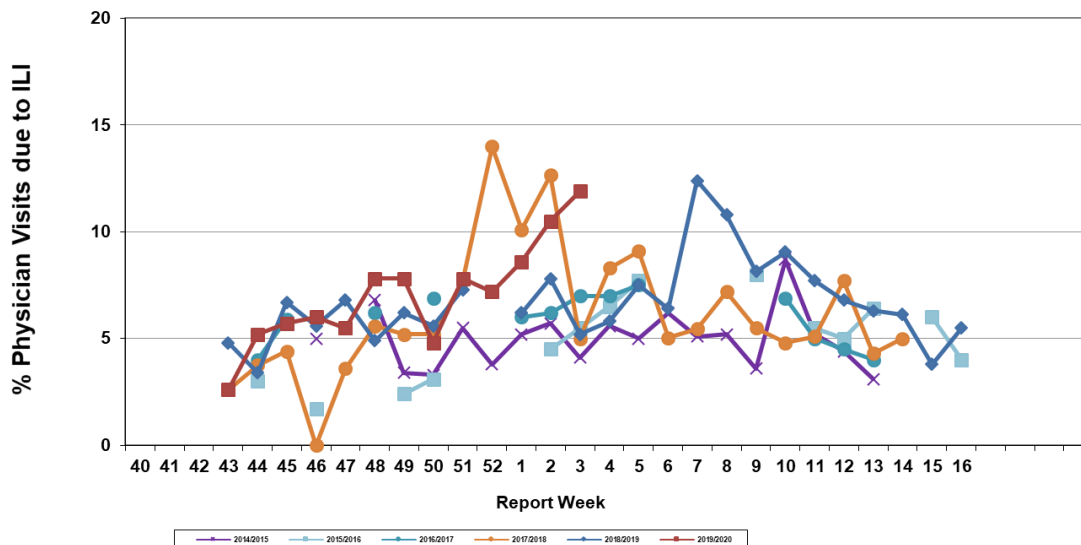


Influenza Season 2019-2020– Riverside County, California

Influenza Surveillance Weekly Update

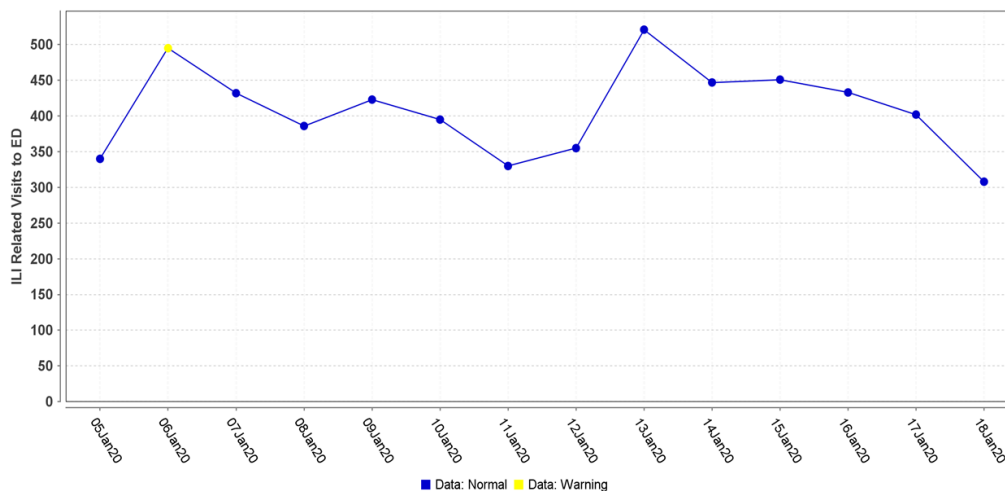
Week ending January 25, 2020

**Percent of Total Visits at Physician Sentinel Sites
due to Influenza-like Illness (ILI),
Riverside County: 2019/2020 Influenza Season**



During week 3*, 11.9% of visits to physician sentinel sites were related to influenza-like illnesses. Compared to historical data, this is above normal limits.

ESSENCE ILI (Weeks 02-03)



Hospital surveillance system triggers alerts due to unusually high influenza-like illness visits. During weeks 2 and 3 ED visits were within normal range, with a warning on 1/6/2020.

Deaths due to Pneumonia and Influenza: During week 3*, 9.2% of deaths were due, in part, to pneumonia or influenza. Compared to historical data, this is above normal limits.

School Absenteeism: During week 3*, 8.6% of students at sentinel school sites were absent due to illness. Compared to historical data, this is within normal limits.

State Influenza Activity: During week 3*, overall influenza activity was “Widespread” in California. Based on available data from 78 enrolled sentinel providers, the percentage of visits for ILI in week 3* (4.4%) is above expected baseline levels for this time of year. One hundred forty nine laboratory-confirmed influenza-associated deaths in adults less than 65 years of age were reported since Sept. 29, 2019. Fifty two laboratory-confirmed influenza outbreaks were reported.

National Influenza Activity: During week 3*, influenza activity remained high in the United States. The proportion of outpatient visits for influenza-like illness (ILI) was 4.7%, which is above the national baseline of 5.0%. The geographic spread of influenza in 48 states and Puerto Rico was reported as widespread, one state reported regional activity, the District of Columbia and one state reported as local activity; the U.S. Virgin Islands reported sporadic activity; Guam did not report. During week 2**, 6.7% of all deaths reported through the National Center for Health Statistics (NCHS) were due to P&I. This percentage is below the epidemic threshold 7.0%. Fifteen new influenza associated pediatric deaths were reported. The total for the season is 54.

*Reporting delayed one week

** Reporting delayed several weeks

Additional Resources

Riverside County Influenza Information:

State of California Influenza Information:

United States Influenza Information:

<http://www.rivco-diseasecontrol.org/Services/InfluenzaInformation.aspx>

<https://www.cdph.ca.gov/Programs/CID/DCDC/Pages/Immunization/Influenza.aspx>

<https://www.cdc.gov/flu/weekly/pastreports.htm>



County of Riverside Department of Public Health
<http://www.rivcohealthdata.org> (951) 358-5557

