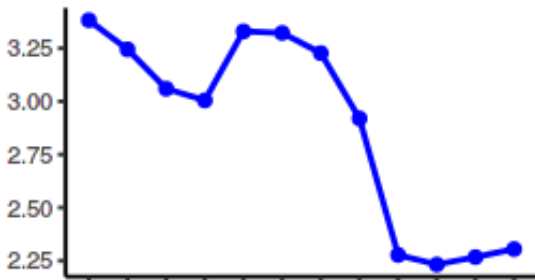


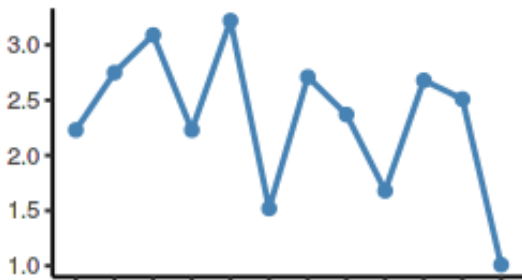
Riverside Opioid Overdose Snapshot: 2014-Q1 to 2016-Q4

Riverside experienced 107 deaths due to all opioid-related overdoses in 2016, the most recent calendar year of data available. The annual crude mortality rate during that period was 4.5 per 100k residents. This represents a 21% decrease from 2014. The following charts present 12-month moving averages and annualized quarterly rates for selected opioid indicators. The map displays the annual zip code level rates for all opioid-related overdoses. Synthetic overdose deaths are likely to be largely represented by fentanyl.

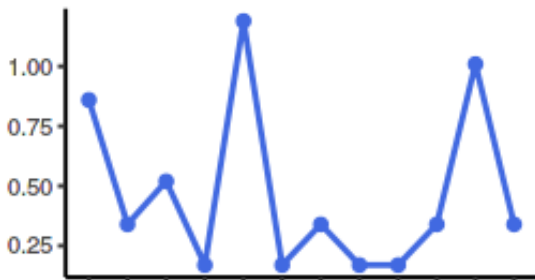
Prescription OD 12-Month Death Rates



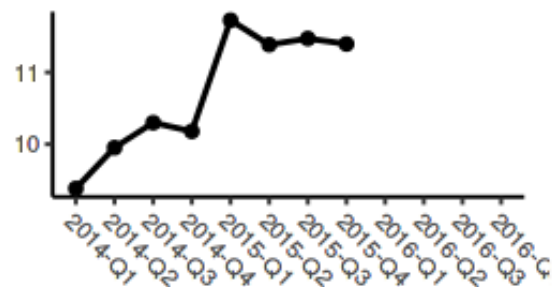
Heroin OD Qtrly Death Rates



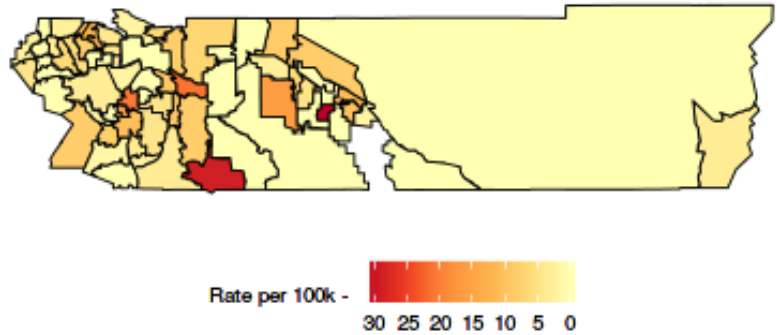
Synthetic OD Qtrly Death Rates



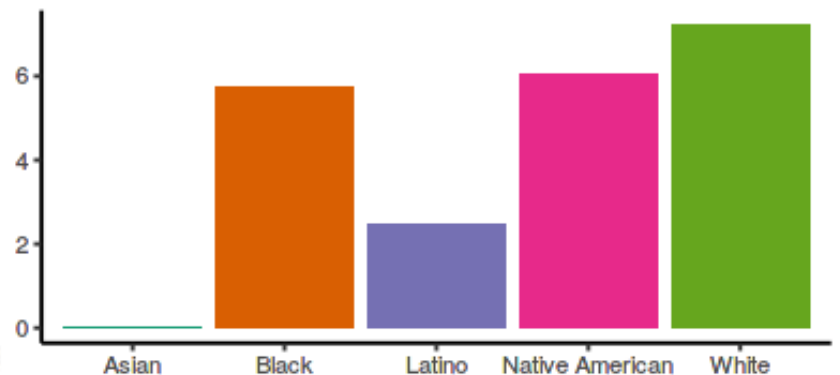
Opioid ED Visit 12-month Rates



All Opioid Overdoses: 2016 Age-Adjusted Annual Death Rates by Zip Code



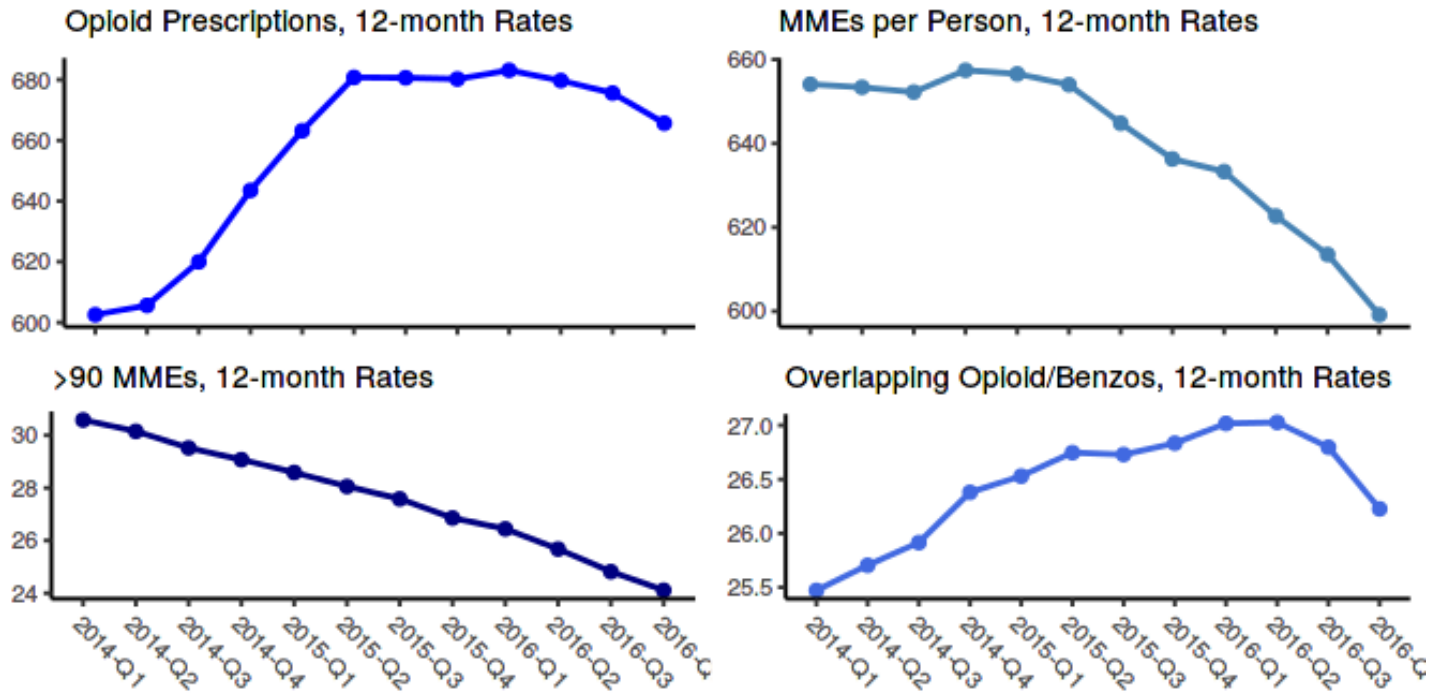
2016 All Opioid OD Age-Adjusted Death Rates by Race/Ethnicity



Footnotes: 12-month rates are based on moving averages; OD = Overdose; Qtrly = Annualized Quarter
 Report produced by the California Opioid Overdose Surveillance Dashboard - <https://cdph.ca.gov/opioiddasboard/>

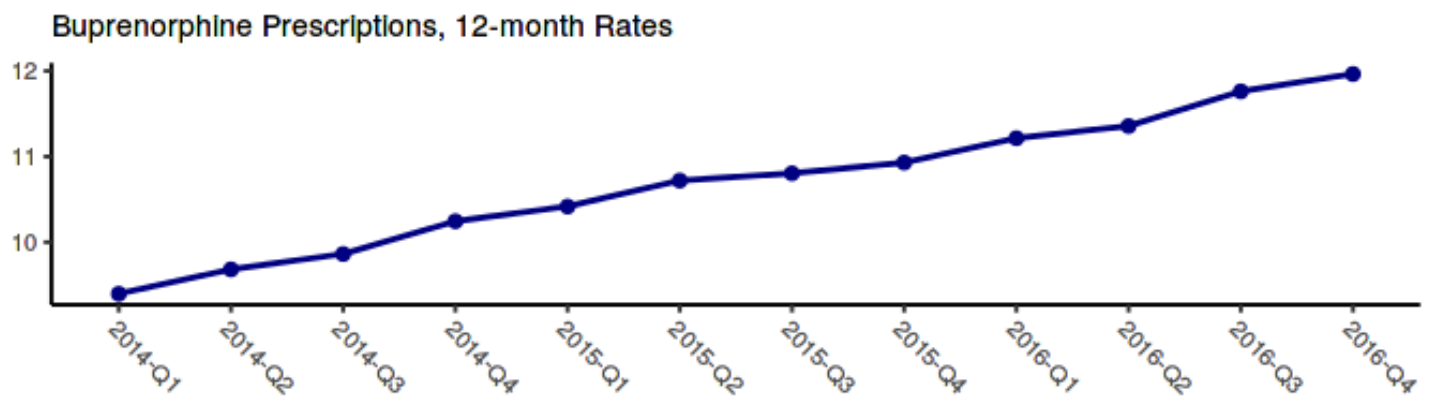
Prescribing

There were 1,589,494 prescriptions for opioids in Riverside in 2016, excluding buprenorphine. The annual prescribing rate during that period was 665.7 per 1,000 residents. This represents a 2% decrease in prescribing from 2014. The following charts present the annualized quarterly prescribing rates, MMEs (morphine milligram equivalents) per person per year, high dosage rate (i.e. greater than 90 Daily MMEs in the quarter), and the opioid/benzodiazepine overlap rate during 2016.



Treatment

Buprenorphine prescriptions in the county are used to gauge the expansion of medication-assisted treatment (MAT). The annual buprenorphine prescribing rate in 2016 was 12 per 1,000 residents. This represents a 9% increase in buprenorphine prescribing from 2014.



Footnotes: 12-month rates are based on moving averages; OD = Overdose; Qtrly = Annualized Quarter
 Report produced by the California Opioid Overdose Surveillance Dashboard - <https://cdph.ca.gov/opioiddasboard/>