



RIVERSIDE UNIVERSITY HEALTH SYSTEM  
BEHAVIORAL HEALTH

# WELLNESS VILLAGE

FOR MORE INFORMATION OR QUESTIONS:

[www.ruhealth.org/wellness](http://www.ruhealth.org/wellness)

-village

WELLNESSVILLAGE@RUHEALTH.ORG

The **Wellness Village** will provide health and wellness services tailored to the community, including:

- Physical health and wellness care (i.e., dental, imaging, pharmacy)
- Adult, children and youth services
- Mental health and substance use disorder services, including mental health urgent care and residential treatment



FOR MORE INFORMATION OR QUESTIONS:

[www.ruhealth.org/wellness](http://www.ruhealth.org/wellness)

-village

WELLNESSVILLAGE@RUHEALTH.ORG

## State-of-the-art campus for children, families, adults:

- Health services, recreation areas, community engagement, wellness resources
- Diverse staff, robust cultural competency program
- Local business partnerships for programs, services
- Green spaces, meditation gardens
- Community meeting space, market & café accessible to the local community



FOR MORE INFORMATION OR QUESTIONS:

[www.ruhealth.org/wellness](http://www.ruhealth.org/wellness) -village

WELLNESSVILLAGE@RUHEALTH.ORG

# WELLNESS VILLAGE HEALTH SERVICES



## COMMUNITY HEALTH & WELLNESS

- Primary Care
- Dentistry
- Imaging
- Pharmacy
- WIC Office



## CHILDREN & YOUTH SERVICES

- Outpatient Services
- Short-Term Residential Therapeutic Program
- Crisis Residential Treatment
- Children's Behavioral Health Urgent Care



## PATIENT & FAMILY TREATMENT HOUSING

- Recovery Residences
- Supportive Housing



## LONG-TERM BEHAVIORAL HEALTH CARE

- Behavioral Health Rehabilitation Center
- Adult Residential Facility



## CAMPUS AMENITIES

- Green Spaces
- Meditation Gardens
- Market & Cafe
- Pet Hotel



## BEHAVIORAL HEALTH CARE

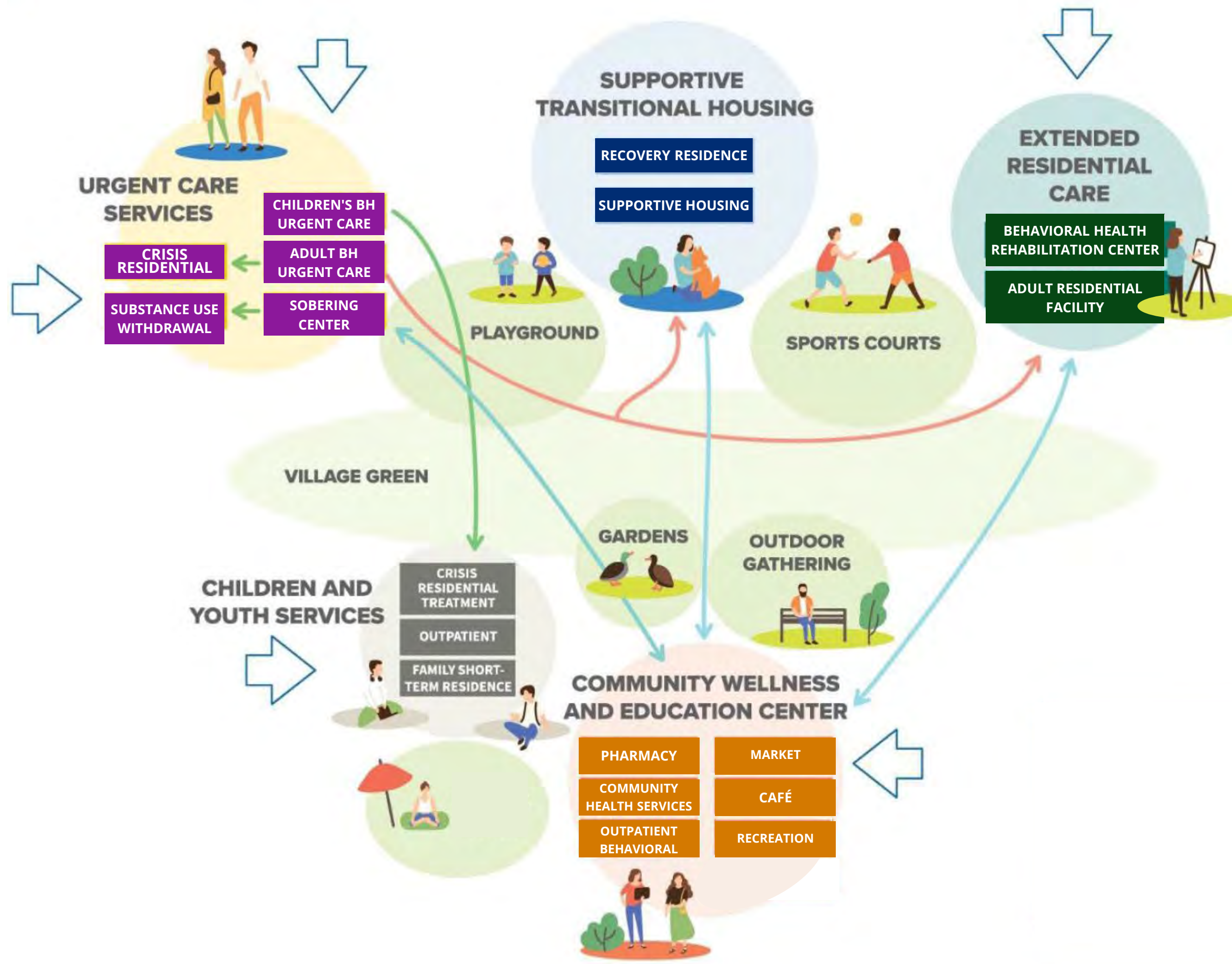
- Children's Behavioral Health Urgent Care
- Adult Behavioral Health Urgent Care
- Sobering Center
- Crisis Residential Treatment
- Outpatient Mental Health Services
- Substance Use Disorder Services

FOR MORE INFORMATION OR QUESTIONS:

[www.ruhealth.org/wellness](http://www.ruhealth.org/wellness)

-village

WELLNESSVILLAGE@RUHEALTH.ORG



FOR MORE INFORMATION OR QUESTIONS:

[www.ruhealth.org/wellness](http://www.ruhealth.org/wellness)

-village

WELLNESSVILLAGE@RUHEALTH.ORG

# WELLNESS VILLAGE VISION



## VILLAGE HIGHLIGHTS

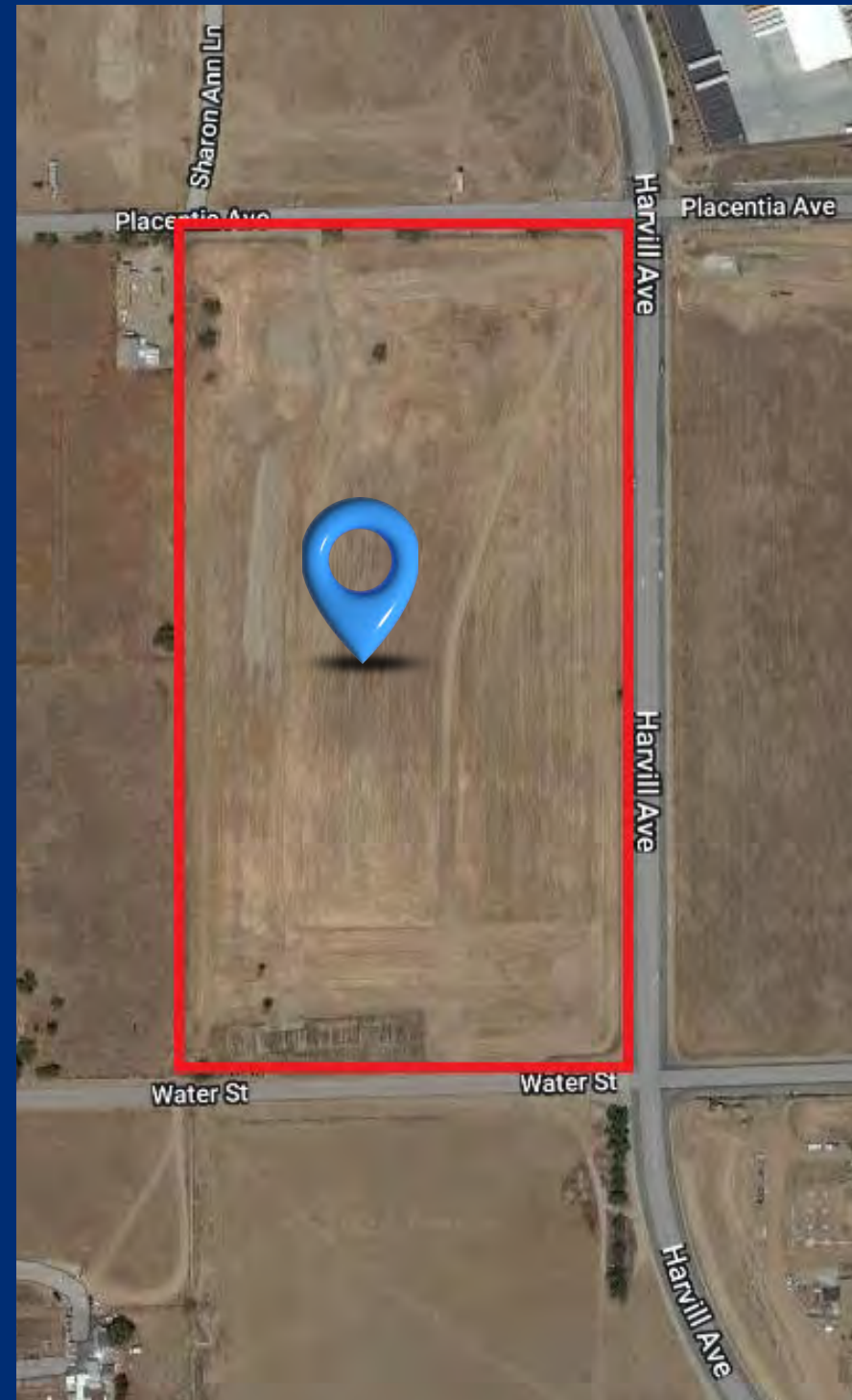
- ▶ 19.4 acres
- ▶ 5 buildings
- ▶ Total square footage of 450k
- ▶ Anticipated opening in early 2027



## BED BREAKDOWN

- ▶ Mental Health Rehabilitation Center: 50
- ▶ Apartments: 299
- ▶ Adult Residential: 90
- ▶ Crisis Residential: 16
- ▶ Children's Crisis Residential: 16
- ▶ Short - Term Residential Therapeutic: 6
- ▶ Substance Use Disorder Residential: 40
- ▶ Mental Health Urgent Care: 12
- ▶ Children's Mental Health Urgent Care: 12
- ▶ Sobering Center: 15
- ▶ TOTAL: 556

Mead Valley



FOR MORE INFORMATION OR QUESTIONS:

[www.ruhealth.org/wellness](http://www.ruhealth.org/wellness)

-village

WELLNESSVILLAGE@RUHEALTH.ORG

# WELLNESS VILLAGE VISION



FOR MORE INFORMATION OR QUESTIONS:

[www.ruhealth.org/wellness](http://www.ruhealth.org/wellness)

-village

WELLNESSVILLAGE@RUHEALTH.ORG

# WELLNESS VILLAGE VISION



FOR MORE INFORMATION OR QUESTIONS:

[www.ruhealth.org/wellness](http://www.ruhealth.org/wellness)

-village

WELLNESSVILLAGE@RUHEALTH.ORG

## The Wellness Village will...

- Improve community health and wellness
- Create new jobs
- Be a desirable place to work, receive health care, and build new life connections
- Increase options pertaining to health care and food access
- Generate a considerable amount of economic revenue in the community
- Foster self-sufficiency and recovery, and save lives!



FOR MORE INFORMATION OR QUESTIONS:

[www.ruhealth.org/wellness](http://www.ruhealth.org/wellness)

-village

WELLNESSVILLAGE@RUHEALTH.ORG