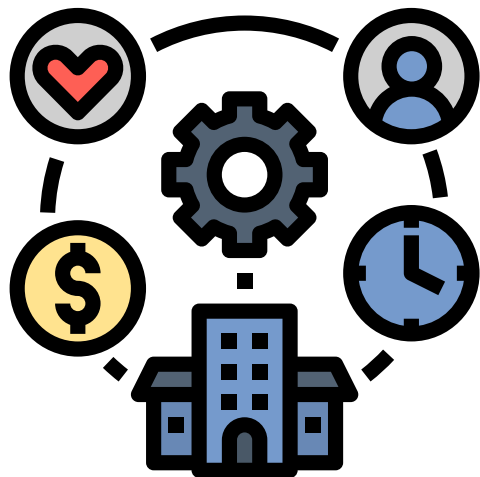


COVID-19 Attitudes and Behaviors of Riverside County Residents



COVID-19 Resources
Accessed



in
affiliation
with



Riverside University Health System – Public Health (RUHS – Public Health) and Health Assessment and Research for Communities (HARC) conducted a study in 2021 about COVID-19 needs among Riverside County adults. HARC collected data in English and Spanish from more than 9,200 randomly selected adults between September 2021 and November 2021. The survey asked questions about attitudes and behaviors towards COVID-19, as well as pandemic experiences and basic needs.

This project was supported by Epidemiology and Laboratory Capacity Enhancing Detection funds and is provided by the Centers for Disease Control and Prevention.

Riverside County residents were asked if they had accessed any resources offered during the COVID-19 pandemic.



Artwork by Darren Olivares, copyright 2021.



14% of participants
accessed food banks or
pantries

11% of participants
received discounts on
their utility bills



17% of participants received unemployment insurance

4% of participants had their rent deferred or forgiven



17% of participants said they did not get any resources at all



in
affiliation
with



RUHS – Public Health will use this report to help them offer programs and services that support Riverside County Residents.

To read the full report and learn more about this study, visit <https://bit.ly/3NRNDmm>