

Unintentional Injuries Are A Leading Cause of Preventable Death Among Individuals Under 50 Years.

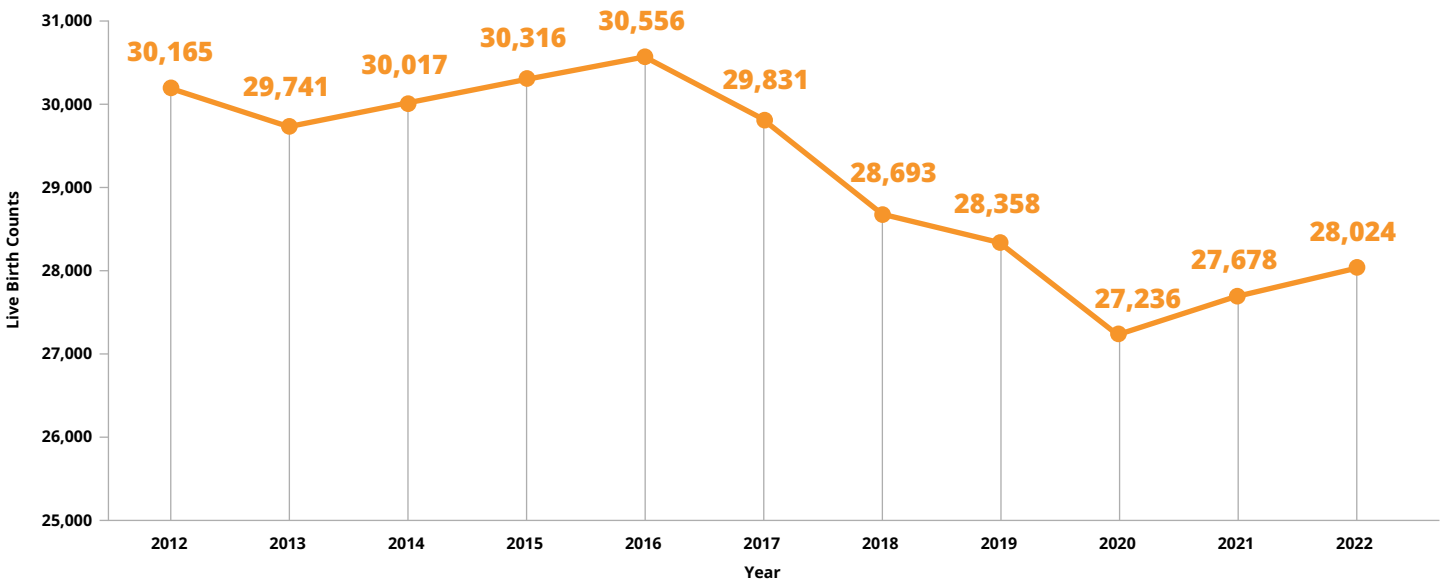
| Rank | Less than 20 | | 20-29 | | 30-39 | | 40-49 | |
|------|----------------------------------|------------------------|--|------------------------|-----------------------------------|------------------------|-----------------------------------|-----------------------------------|
| | Female | Male | Female | Male | Female | Male | Female | Male |
| 1 | Perinatal Conditions | Unintentional Injuries | Unintentional Injuries | Unintentional Injuries | Unintentional Injuries | Unintentional Injuries | Cancer | Unintentional Injuries |
| 2 | Unintentional Injuries | Perinatal Conditions | Suicide | Suicide | Cancer | Suicide | Unintentional Injuries | Heart Disease |
| 3 | Birth Defects | Homicide | Pregnancy, Childbirth & the Puerperium | Homicide | Chronic Liver Disease & Cirrhosis | Homicide | Heart Disease | Cancer |
| 4 | Cancer | Birth Defects | Cancer | Cancer | Suicide | Heart Disease | COVID-19 | COVID-19 |
| 5 | Homicide / Influenza & Pneumonia | Suicide | Homicide / Heart Disease | COVID-19 | COVID-19 / Heart Disease | Cancer | Chronic Liver Disease & Cirrhosis | Chronic Liver Disease & Cirrhosis |

| Rank | 50-59 | | 60-69 | | 70-79 | | 80+ | |
|------|-----------------------------------|------------------------|---------------------|------------------------|---------------------|---------------------|---------------------|---------------------|
| | Female | Male | Female | Male | Female | Male | Female | Male |
| 1 | Cancer | Heart Disease | Cancer | Heart Disease | Cancer | Heart Disease | Heart Disease | Heart Disease |
| 2 | Heart Disease | Unintentional Injuries | Heart Disease | Cancer | Heart Disease | Cancer | Alzheimer's Disease | Cancer |
| 3 | COVID-19 | Cancer | COVID-19 | Unintentional Injuries | Chronic Respiratory | COVID-19 | Cancer | Alzheimer's Disease |
| 4 | Unintentional Injuries | COVID-19 | Chronic Respiratory | COVID-19 | COVID-19 | Stroke | Stroke | COVID-19 |
| 5 | Chronic Liver Disease & Cirrhosis | Diabetes | Stroke / Diabetes | Diabetes | Alzheimer's Disease | Chronic Respiratory | Chronic Respiratory | Stroke |

Source: California Integrated Vital Records System (Cal-IVRS), 2022.

Notes: Vaguely defined categories were excluded from selection as rankable causes. These included the category "Symptoms, signs and abnormal clinical and laboratory findings, not elsewhere classified" and all categories beginning with the words "other," "all other," "certain other," or "unspecified."

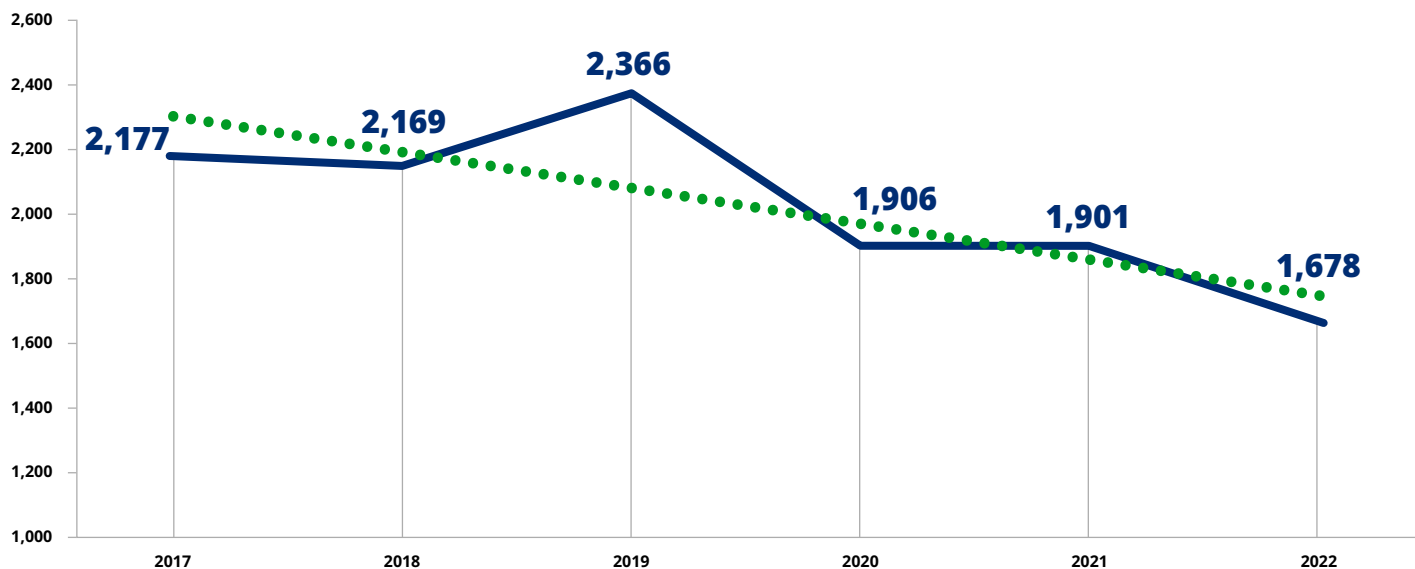
Births in Riverside County Began to Increase After A Four Year Decline.



Source: California Department of Public Health (CDPH), Center for Health Statistics and Informatics (CHSI), (2017-2022). California Integrated Vital Records System (Cal-IVRS). California Comprehensive Birth File (CCBF).

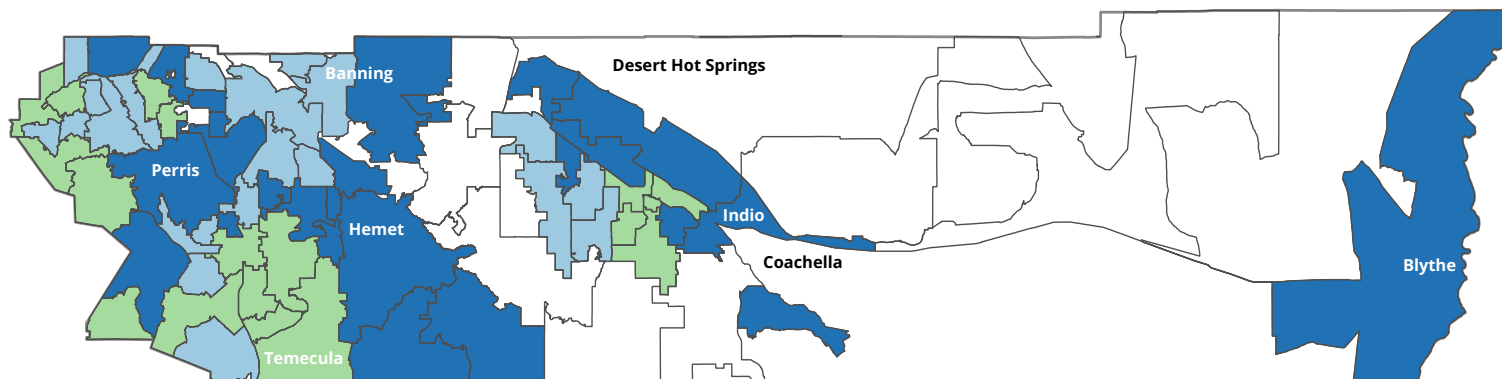
Notes: Including all residential live births in Riverside County from 2012-2022.

Chlamydia Has Decreased Among Teens Since 2019.

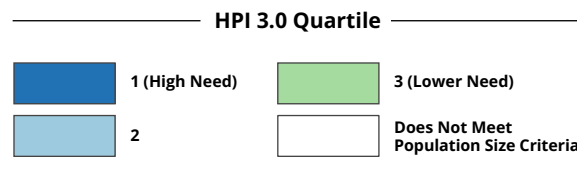


Source: Community Analyst (population Estimates), CalREDIE STD data
 Notes: Population: Teens ages 15-19
 Years: 2017-2022

Riverside County Has Community Conditions That Are Less Healthy Than 61% of Other California Counties According to The California Healthy Places Index.

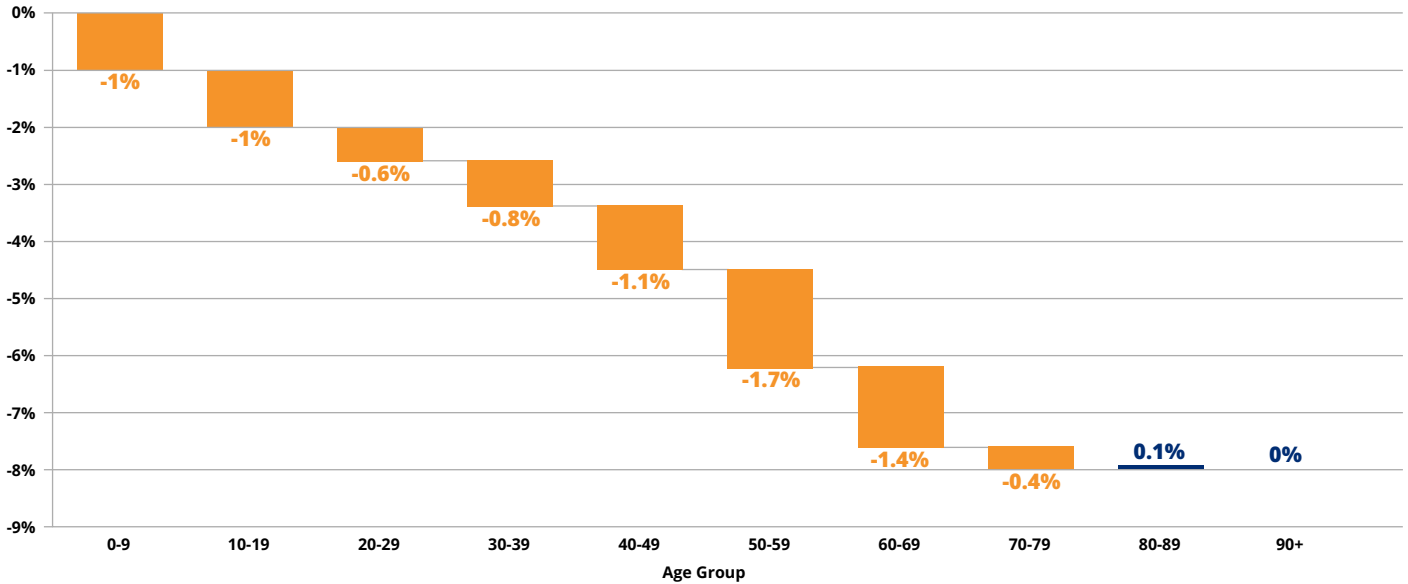


The HPI index is used to compare the health and well-being of communities, identify health inequities, and quantify the factors that shape health.



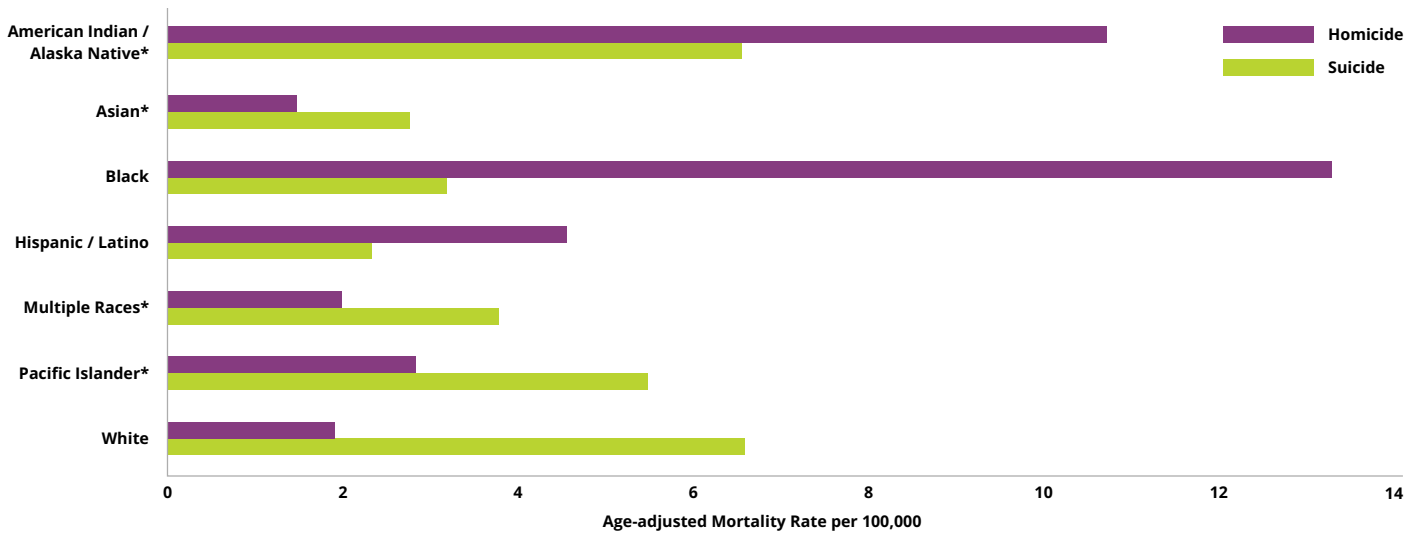
Source: California Healthy Places Index
 Notes: Healthy Places Index Quartile: 3 out of 4 (4 being area of highest need)
 No Zip code presently scores in the 75th percentile (Quartile score of 1)

Less People Received The Influenza Vaccine in Riverside County During The 2022-2023 Season. Older Groups Witnessed The Most Decrease.



Source: California Immunization Registry (CAIR) and California Department of Finance Population Projections

Fatal Gun Injuries by Homicide Disproportionally Affect Riverside County's Black Population.



Source: California Integrated Vital Records System (Cal-IVRS), 5-year age-adjusted rate (2018-2022), extracted September 2023.

Notes: *An asterisk denotes a group wherein there is not enough data to accurately draw conclusions from.

